

Side, Rear & BESA Box cable entry



## LED CCT Bulkhead

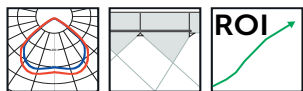
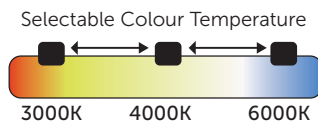
This cost-effective, colour switchable bulkhead is an ideal replacement for 16w, 28w and 38w fluorescent fittings. With the benefits of a high transmission frosted diffuser, rear, side & BESA Box cable entry and is IP65 as standard.

- CCT Cool White / Warm White / Daylight (3/4/6000K)
- The smart replacement for 16w, 28w and 38w fluorescent
- Tri level control now included on corridor dim versions
- Microwave and corridor dimming function option
- Supplied with White and Black Bezels
- White and Black Eyelids available
- High transmission frosted diffuser
- No lamp replacement
- No maintenance
- 35000 hour life
- IP65 Sealed fitting
- 8M detection range on corridor dim option (2.6m mounting height)
- Rear, Side & BESA Box cable entry
- Supplied with tamper-proof screws

Wattage Selected	Colour Temp (K) Selected	Lumens (lm)
9W	3000	1255
	4000	1390
	6000	1380
14W	3000	1950
	4000	2155
	6000	2030
18W	3000	2285
	4000	2550
	6000	2410



LMR80: Maximum 20% of lumen depreciation over rated hours.  
B10: Maximum 10% of fittings failure rate over rated hours



technical@belllighting.co.uk  
sales@belllighting.co.uk



# LED CCT Bulkhead

## Technical Specification

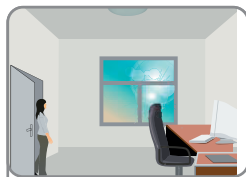
Construction	Polycarbonate body and lens
Driver	BELL
LED Chip	Samsung
IP Rating	IP65
Operating Temp	-20°C to +35°C
Input Voltage	220 - 240V
Power Factor	> 0.9
CRI	85 - Exceeds EU standard of Ra 80 for Colour Rendering Index
LMR	80 - Exceeds EU standard of 70 for Lumens Maintenance Ratio

Code	W	Description	Lm	Temp	Hours
91228	9/14/18	AQUA1 CCT Wattage Switchable Standard White/Black Bezel	1255-2550	3/4/6000K	35000
91229	9/14/18	AQUA1 CCT Wattage Switchable Emergency White/Black Bezel	1255-2550	3/4/6000K	35000
91230	9/14/18	AQUA1 CCT Wattage Switchable M/Wave Sen On/Off White/Black Bezel	1255-2550	3/4/6000K	35000
91231	9/14/18	AQUA1 CCT Wattage Switchable EMERGENCY M/Wave Sen ON/off White/Black Bezel	1255-2550	3/4/6000K	35000
91232	9/14/18	AQUA1 CCT Wattage Switchable M/Wave Sen Cor/Dim White/Black Bezel	1255-2550	3/4/6000K	35000
91233	9/14/18	AQUA1 CCT Wattage Switchable EMERGENCY M/Wave Sen Cor/Dim White/Black Bezel	1255-2550	3/4/6000K	35000

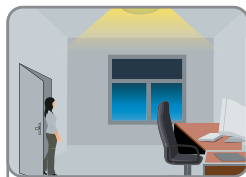
### Microwave Max Operating Height 3.2m

Emergency versions must be tested in line with the requirements of BS5266, failure to do so may effect battery life and warranty

## Tri-Level Control (Corridor Function)



With sufficient natural light, the fitting does not switch on when presence is detected.



With insufficient natural light, the sensor switches on automatically when someone enters the room.



When the room is empty, light dims to stand-by level (10% / 20% / 30%) after the hold-time.



Light switched off automatically after the stand-by period has elapsed.

Offers 3 levels of light: 100%-dimmed light (10%, 20%, 30%)-off; and 2 periods of selectable waiting time: motion hold-time and stand-by period; selectable daylight threshold and choice of detection area.



