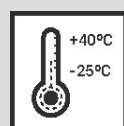
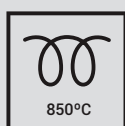
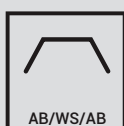
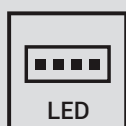
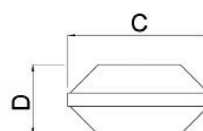
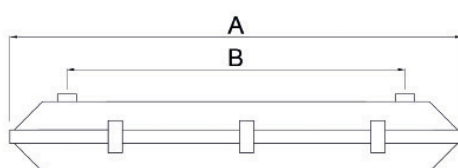


PISTON ECO



APLICACIONES INDICADAS / SUITABLE APPLICATIONS / APPLICATIONS APPROPRIÉES

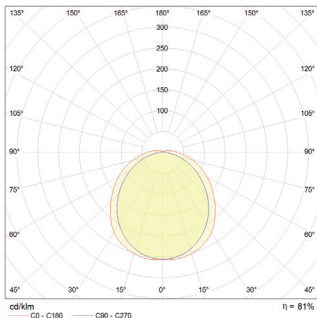




RG 1	MACADAM 3/4	UGR <19	CR>80	L70B50 > 50.000	IP66/65	IK08	CE EN 60598-1
------	----------------	------------	-------	-----------------------	---------	------	------------------



1 MÓDULO LED / 1 LED MODULES / 1 MODULES LED



Ref.	Tamaño Size Dimension	Potencia Watts Puissance	Emisión Light emission Intensité lum.	Emisión neta Net output Flux sortant	Tª color Tª colour Tª couleur	A	B	C	D	Cierre Fasteners Fermetures	Embalaje Packaging Emballage
		(W)	(Lm)	(Lm)	(°K)	(mm)	(mm)	(mm)	(mm)		
PC113	600	11	1570	1272	3000	664	260	100	110	6	1
PC114	600	11	1670	1320	4000	664	260	100	110	6	1
PC123	600	18	2670	2163	3000	664	260	100	110	6	1
PC124	600	18	2777	2249	4000	664	260	100	110	6	1
PC213	1200	22	3140	2543	3000	1274	870	100	110	8	1
PC214	1200	22	3272	2650	4000	1274	870	100	110	8	1
PC223	1200	36	5337	4323	3000	1274	870	100	110	8	1
PC224	1200	36	5555	4500	4000	1274	870	100	110	8	1
PC313	1500	28	3928	3221	3000	1575	650	100	110	12	1
PC314	1500	28	4260	3450	4000	1575	650	100	110	12	1
PC323	1500	45	6671	5470	3000	1575	650	100	110	12	1
PC324	1500	45	6944	5694	4000	1575	650	100	110	12	1

ACCESORIOS PISTON / PISTON ACCESORIES / ACCESSOIRES PISTON



Ref. **S2150**

Grapa de acero inoxidable
Stainless steel clip
Clip acier inox



Ref. **S2151**

Sujeción a carril
Rail fastening
Platine de fixation sur rail



Ref. **Q0943**

Conector 3 polos
3 poles connector
3 pôles connecteur



Ref. **Q0944**

Conector 3 polos
3 poles connector
3 pôles connecteur

LÍNEA CONTINUA
CONTINUOUS LINE CONNECTION
CÂBLAGE TRAVERSANT

3 polos / 3 poles / 3 pôles

Ref. Q0883

5 polos / 5 poles / 5 pôles

Ref. Q0887

DALI

EMERGENCY
1h / 3h