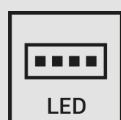


# WATEX



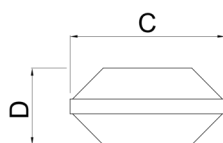
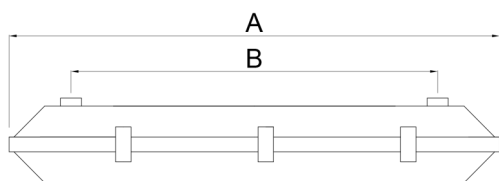
## APLICACIONES INDICADAS / SUITABLE APPLICATIONS / APPLICATIONS APPROPRIÉES



**Apta para zonas ATEX: 2/21,22**  
**Suitable for ATEX zones 2/21,22**  
**Convient aux zones ATEX: 2/21, 22**

**Ta = -20— 45°C**

Prensaestopas: M20 Cable no armado 7-12mm  
Cable gland: M20 Non armored cable 7-12mm  
Presse-étoupe: M20 Non armé cable 7-12mm





RG0



UGR  
<19

CR>80

L70B50  
>  
72.000

IK08

IP66

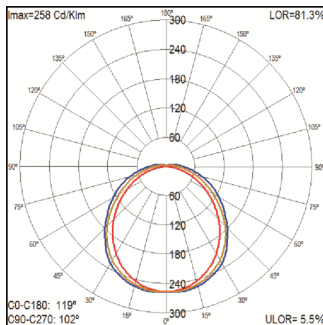
2014/34/EU



II 3G2D  
Ex ec IIC T6 Gc  
Ex tb IIIC 85°C Db



**1 MÓDULO LED / 1 LED MODULE / 1 MODULE LED**



Ref.	Tamaño Size Dimension	Potencia Power Puissance	Emisión bruta Gross output Flux de la source	Emisión Neta Net output Flux sortant	Tª color Tª colour Tª couleur	A	B	C	D
		(W)	(Lm)	(Lm)	(°K)	(mm)	(mm)	(mm)	(mm)
EW113C	600	13	1.490	1.210	3.000	664	260	100	110
EW114C	600	13	1.550	1.259	4.000	664	260	100	110
EW123C	600	16	2.560	2.019	3.000	664	260	100	110
EW124C	600	16	2.670	2.168	4.000	664	260	100	110
EW213C	1.200	24	2.980	2.420	3.000	1.274	870	100	110
EW214C	1.200	24	3.200	2.598	4.000	1.274	870	100	110
EW223C	1.200	32	5.120	4.157	3.000	1.274	870	100	110
EW224C	1.200	32	5.340	4.336	4.000	1.274	870	100	110
EW313C	1.500	29	3.720	3.021	3.000	1.575	650	100	110
EW314C	1.500	29	4.000	3.248	4.000	1.575	650	100	110
EW323C	1.500	40	6.310	5.124	3.000	1.575	650	100	110
EW324C	1.500	40	6.700	5.440	4.000	1.575	650	100	110

**REF. Q0981**

Opcional: Prensaestopas ATEX M20 para cable armado.  
Optional: M20 ATEX cable gland for armored cable.  
Optionel: Presse-étoupe M20 pour câble armé.

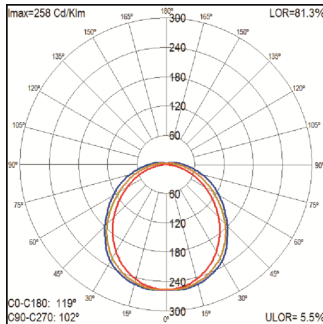


**Junta de cierre: Silicona.**  
**Closing gasket: silicone.**  
**Joint: Silicone.**

**Clips cierre acero inoxidable.**  
**Stainless Steel closing clips.**  
**Pièces de fermeture en acier inoxydable**



## 2 MÓDULOS LED / 2 LED MODULES / 2 MODULES LED



Ref.	Tamaño Size Dimension	Potencia Power Puissance	Emisión bruta Gross output Flux de la source	Emisión Neta Net output Flux sortant	Tª color Tª colour Tª couleur	A	B	C	D
		(W)	(Lm)	(Lm)	(°K)	(mm)	(mm)	(mm)	(mm)
EY113C	600	24	2.980	2.420	3.000	664	260	160	110
EY114C	600	24	3.200	2.598	4.000	664	260	160	110
EY123C	600	32	5.120	4.157	3.000	664	260	160	110
EY124C	600	32	5.340	4.336	4.000	664	260	160	110
EY213C	1.200	48	5.960	4.840	3.000	1.274	870	160	110
EY214C	1.200	48	6.400	5.197	4.000	1.274	870	160	110
EY223C	1.200	64	10.240	8.315	3.000	1.274	870	160	110
EY224C	1.200	64	10.680	8.672	4.000	1.274	870	160	110
EY313C	1.500	58	7.440	6.041	3.000	1.575	650	160	110
EY314C	1.500	58	8.000	6.496	4.000	1.575	650	160	110
EY323C	1.500	80	12.620	10.247	3.000	1.575	650	160	110
EY324C	1.500	80	13.400	10.881	4.000	1.575	650	160	110

## ACCESORIOS WATEX / WATEX ACCESSORIES / ACCESSOIRES WATEX

DALI	EMERGENCY 1h/3h
------	--------------------

Ref.	Q0978
	Sujeción a báculo Pole adapter Adaptateur de lampadaire



Ref.	Q0974	Q0975	Q0976
	Suplemento conexión 5 polos	Suplemento Línea Continua 3 polos	Suplemento Línea Continua 5 polos
	5 poles terminal block option	Trough wiring 3 poles	Trough wiring 5 poles
	Possibilité de connexion à 5 pôles	3-pole Continuous Line supplement	5-pole Continuous Line supplement

