

Elettrinverter

Electronic power supply unit for emergency lighting to illuminate fluorescent lamps (T5, T8 and compact-type fluorescent tubes). Can be easily installed inside ceiling lights. Complete with sealed rechargeable batteries with patented mounting system. The autonomy and luminous flux in an emergency situation is automatically adjusted in accordance with the bulb connected. Quick-fit connections.



GENERAL CHARACTERISTICS

Power T5 15÷8 W
T8 18, 36, 58 W

Power supply 230Vac ± 10% 50Hz

Operation Maintained (SA), Not Maintained (SE), RM

Standard EN 61347-1, EN 61347-2-7

Protection grade according to the fixture in which it is mounted

Autonomy T5 1h - 1h15 - 1h30 - 2h - 2h30 - 3h - 4h
T8 1h - 1h15 - 1h30 - 2h - 2h30 - 3h - 4h

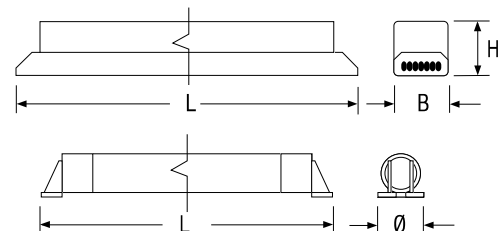
Working Temp. 0 + 50°C (Battery)
 -20 + 50°C (Inverter)

Max enclosure temperature 70°C

Technical data TR Power supply: 230V~50Hz
 Certificate for operation with linear fluorescent tubes of: 18, 36, 58W
 G13 (8348) 18, 36W G13 (8376)
 Nominal output frequency:
 with 20kHz lamp, without 50kHz lamp,
 LED charging circuit activation light -
 Charging time: max 24 hours Option to connect cables with a cross-section of 0.75 to 1.5mm²
 Control temperature: TC 50°C

AT, CT, CTOC Supply voltage: 230V ~ 50Hz Designed for use with fluorescent lamps of 18 and 58W in power
 Accumulators: NiCd 6V 4Ah control temperature: TC 50°C ambient temperature: 0 ÷ 40 ° C Nominal output frequency: with 20kHz lamp, without 90kHz lamp, LED charging circuit activation light - Charging time: 12 hours

Housing Polycarbonate



Order code Inverter	Dimensions Inverter (mm)			Dimensions battery (mm)	
	L	B	H	L	Ø
9056	270	40	36	370	37
9057	270	40	36	230	30
Lamp	14W	28W	35W	54W	80W
Flux%	33	30	27	18	15
Autonomy	2h30'	1h45'	1h15'	1h45'	1h

Order code Inverter	Dimensions Inverter (mm)			Dimensions battery (mm)	
	L	B	H	L	Ø
2571	270	40	36	370	37
2572	270	40	36	370	37
Lamp	18W	36W	58W		
Flux%		30	19	17	

Order code Inverter	Dimensions Inverter (mm)			Dimensions battery (mm)		
	L	B	H	L	Ø	
8333	232	40	36	345	37	
8334	232	40	36	345	33	
Lamp	28W	35W	39W	49W	54W	80W
Flux%	30	30	20	25	15	12
Autonomy	1h30'	1h	1h30'	1h	1h	1h

Order code Inverter	Dimensions Inverter (mm)			Dimensions battery (mm)	
	L	B	H	L	Ø
8376	232	40	36	235	30
8377	232	40	36	235	30
Lamp	36W	58W			
Flux%		16	12		

Order code Inverter	Dimensions Inverter (mm)			Dimensions battery (mm)	
	L	B	H	L	Ø
8206	232	40	36	208	37
8207	232	40	36	208	33
Lamp	14W	21W	24W		
Flux%	30	29	20		

Order code Inverter	Dimensions Inverter (mm)			Dimensions battery (mm)	
	L	B	H	L	Ø
2551	270	40	36	400	37
2542	270	40	36	400	37
Lamp	18W	36W	58W		
Flux%	30	19	17		

Order code Inverter	Dimensions Inverter (mm)			Dimensions battery (mm)	
	L	B	H	L	Ø
8348	232	40	36	210	30
8349	232	40	36	210	30
Lamp	18W	36W	58W		
Flux%	16	12	08		

Order code Inverter	Dimensions Inverter (mm)			Dimensions battery (mm)	
	L	B	H	L	Ø
2553	232	40	36	220	37
2544	232	40	36	220	37
Lamp	18W	36W	58W		
Flux%	16	12	08		

BCS

Battery Control System - T5

W	Order code	Description	Model	Battery	Absorption max. W	Weight kg	Pack
14÷24	8206	ELETRIN 933/14-24WSAT5	SA	NiCd 3.6V 4Ah	6	0.8	12
28÷80	8333	ELETRIN 933/28-80WSAT5	SA	NiCd 6V 4Ah	6	1.1	12
14÷24	8207	ELETRIN 933/14-24WSA/RMT5	SA RM	NiCd 3.6V 4Ah	6	0.8	12
28÷80	8334	ELETRIN 933/28-80WSA/RMT5	SA RM	NiCd 6V 4Ah	6	1.1	12

AT

Autotest -T5

W	Order code	Description	Model	Battery	Absorption max. W	Weight kg	Pack
14÷80	9056	ELETT 935 AT 14-80 SA T5	SA	NiCd 6V 4Ah	7	1.2	12
14÷80	9057	ELETT 935 AT 14-80 SA/RM T5	SA RM	NiCd 6V 4Ah	7	1.4	12

BCS

Battery Control System T8

W	Order code	Description	Model	Battery	Absorption max. W	Weight kg	Pack
18÷36	2565	933/18-36SE1	SE	NiCd 3.6V 1.8Ah	7	0.6	12
18÷40	2549	933.2/SE	SE	NiCd 6V 2Ah	7	0.7	12
18÷58	2553	933/18-58SE1	SE	NiCd 3.6V 4Ah	7	0.8	12
18÷65	2551	933.4/SE	SE	NiCd 6V 4Ah	7	1.0	12
18÷36	8376	834/18-36 4.8 SA	SA	NiCd 4.8V 1.7Ah	5	0.5	12
18÷36	2567	933/18-36SA1	SA	NiCd 3.6V 1.8Ah	7	0.6	12
18÷36	3526	833/18-36/SA1	SA	NiCd 3.6V 1.8Ah	7	0.6	12
18÷40	2540	933.2/SA	SA	NiCd 6V 2Ah	7	0.7	12
18÷58	8348	834/18-58 4.8 SA	SA	NiCd 4.8V 2.0Ah	5	0.5	12
18÷58	2544	933/18-58SA1	SA	NiCd 3.6V 4Ah	7	0.8	12
18÷58	3527	833/18-58/SA1	SA	NiCd 3.6V 4Ah	7	0.8	12
18÷65	2542	933.4/SA	SA	NiCd 6V 4Ah	7	1.0	12
36÷58	2561	933.7/SA	SA	NiCd 6V 7Ah	11	1.5	6
18÷36	2566	933/18-36SE1 RM	SE RM	NiCd 3.6V 1.8Ah	7	0.6	12
18÷40	2550	933.2/SE RM	SE RM	NiCd 6V 2Ah	7	0.8	12
18÷58	2554	933/18-58SE1 RM	SE RM	NiCd 3.6V 4Ah	7	0.8	12
18÷65	2552	933.4/SE RM	SE RM	NiCd 6V 4Ah	7	1.1	12
18÷36	2568	933/18-36SA1RM	SA RM	NiCd 3.6V 1.8Ah	7	0.6	12
18÷40	2541	933.2/SA RM	SA RM	NiCd 6V 2Ah	7	0.8	12
18÷58	8349	834/18-58 4.8 SA RM	SA RM	NiCd 4.8V 2.0Ah	5	0.5	12
18÷58	2545	933/18-58SA1RM	SA RM	NiCd 3.6V 4Ah	7	0.8	12
18÷65	2543	933.4/SA RM	SA RM	NiCd 6V 4Ah	7	1.0	12
36÷58	2562	933.7/SA RM	SA RM	NiCd 6V 7Ah	17	1.5	6

AT

Autotest -T8

W	Order code	Description	Model	Battery	Absorption max. W	Weight kg	Pack
18÷58	2571	935.4AT 18-58SA	SA	NiCd 6V 4Ah	7	1.2	12
18÷58	2572	935.4AT 18-58SA/RM	SA RM	NiCd 6V 4Ah	7	1.2	12