



GENERAL CHARACTERISTICS

Equivalent Power* 250, 400 W

Standard EN 60598-1, EN 60598-2-1, EN 60598-2-22 (fundamental requirements), EN 62471 (Photobiological hazard)

Power supply Universal Multi Voltage
93÷265 Vac - 50/60Hz 176÷250 Vdc

Protection grade IP66 with ventilation valve, IK09

Working temp. -30 ÷ +60°C (!)

Mounting on the ground, wall, spotlight towers

Housing Die-cast aluminium RAL 7040 grey

Louvre Sheet metal with parabolic development in anti-iridescent, mirror finished, anodised aluminium. Symmetrical Asymmetrical

Diffuser Prismatic toughened glass 4mm thick

Driver SELV electronic SD (Cos $\varphi \geq 0.97$)
Electronic with intelligent dimming

MTBF Control gear** 100.000h

Luminous flux maintenance**
>60.000h (1x400W) (L80B20)
>70.000h (1x250W) (L80B20)

Colour deviation 3 SDCM

* Equivalent power for comparison with metal halide fixtures

** At a reference working temperature of 25°C

(!) At highest working temperature thermal protection may reduce the output power

F250/400 LED

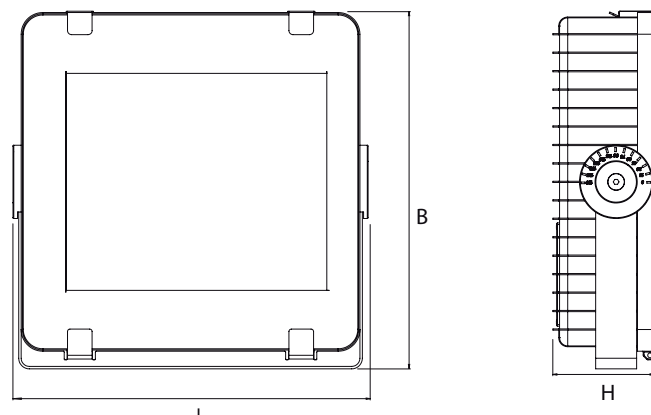
Floodlight

The F250/F400 LED is a fixture of the latest generation able to combine the advantages of the LED light source with state-of-the-art optic systems, as regards both performance and flexibility of application. The LED sources used, with very high efficiency, produce unprecedented lighting that allows the illumination of building façades or hardstands, even at considerable distance. The diffuser has an ample and uniform area of emission, allowing very low luminosity and therefore reduced glare with high visual comfort. The excellent mechanical characteristics (IP66-IK09) allow installation in outdoor settings even in extreme conditions, while the possibility of versions with a symmetrical or asymmetrical beam makes the fixture particularly versatile.

The "square cut" design of the FH350 LED allows movements through 360°, on the axis of rotation of the goniometric bracket, thus enabling great flexibility of movement and mounting.

In the versions with intelligent dimming, to ensure maximum energy saving, self-adapting technology is used on the sensor integrated in the fixture, to automatically adjust the emission of light according to the reading of the natural light present on the work surface.

A LED INVERTER is also available which transforms the fixture into an emergency maintained fixture, to light a section of the LED source in the event of a black-out.



Accessories

supplied

Order code Description

- ANTI-VANDAL SCREWS

- GONIOMETRIC BRACKET

418319000 CABLE GLAND M20 WITH VENTILATION VALVE

Building automation



to be ordered separately

Order code Description

20102 BUILDING AUTOMATION CENTRAL UNIT

20124 BUILDING AUTOMATION CENTRAL UNIT+WIFI

20104 2 INPUT INTERFACE - RADIO TRANSMITTER

15022 BUILDING AUTOMATION RADIO MODULE

15024 DALI MODULE

15034 1-10V MODULE

Accessories



supplied

Order code Description

15039 OPTICOM PHOTOSENSOR

Accessories

to be ordered separately

Order code Description

12661 POST HEAD 2x 60-76

12662 POST HEAD 4x 60-76

12658 PROTECTIVE GRID



GROUND MOUNTING



WALL MOUNTING



PROTECTIVE GRID



GONIOMETRIC BRACKET



12658 PROTECTIVE GRID

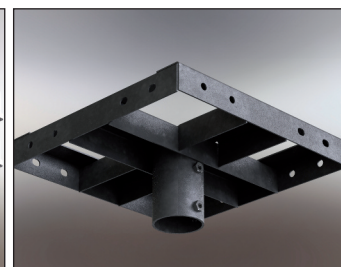
SPECIAL VARIANTS:
COLOUR TEMPERATURE ON REQUEST, COLOUR RENDERING ≥ 90
Contact the Beghelli sales network

Efficiency and dimming

The increase in luminous efficacy (lm/W) and the useful life of the device may vary significantly according to the degree to which it is dimmed. Assuming an average level of 50% of the luminous flux, the following results are obtained with the F250/400 LED:

Dimming SD 50%
Device duration +40%
Luminous efficiency +10%

POST MOUNTING

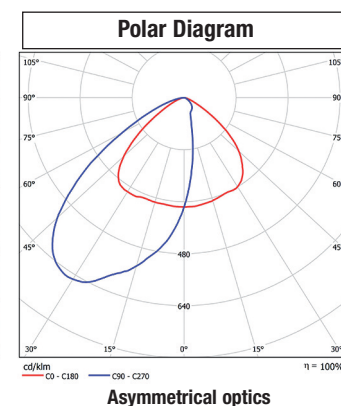
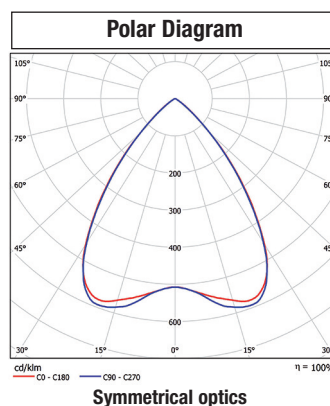


12661 POST HEAD 2x 60-76

to be ordered separately

12662 POST HEAD 4x 60-76

to be ordered separately



EMERGENCY WITH LED INVERTER

	TR	AT	LG	LGFM
19368 INVERTER PLUG&LIGHT LED SE/SA 3H 20-60V IP65	to be ordered separately			
19364 INV LED IP65 AT/LG 123H (addressable)	to be ordered separately			
19365 INV LED IP65 AT/LG 123H (addressable)	to be ordered separately			
RA02*** AUTORIPARA INVERTER BATTERY 7.2V 1.7Ah	to be ordered separately			

***Contact the Beghelli sales network for availability

F250/400 LED

SmartDriver **SD**

Power* W	Order code	Description	Optic	LED Power W	Colour Temp. K	Colour rendering	Power consumption Max W	N° LEDs	Flux of LEDs lm (Tj=25°C)	Flux of fixture lm	Luminous efficiency lm/W	Energy Class	Packaging
250	F250SSD	PRO LED 250 SM SD 4000K	SIMMETRICA	110	4000	>80	119	256	18500	16000	134	A++	1
400	F400SSD	PRO LED 400 SM SD 4000K	SIMMETRICA	216	4000	>80	234	512	35000	30000	128	A++	1
250	F250ASD	PRO LED 250 AS SD 4000K	ASIMMETRICA	110	4000	>80	119	256	18500	16000	134	A++	1
400	F400ASD	PRO LED 400 AS SD 4000K	ASIMMETRICA	216	4000	>80	234	512	35000	30000	128	A++	1