

## Crimping dies

Standard copper tube terminals and connectors, **hexagonal pressing**



**400-C12**



Art. no.	mm <sup>2</sup>	PW	kg	PU
216008	10	10	0,211	1
216010	16	10	0,212	1
216012	25	10	0,210	1
216014	35	13	0,207	1
216016	50	13	0,224	1
216018	70	14	0,221	1
216020	95	14	0,226	1
216022	120	14	0,200	1
216024	150	11	0,200	1
216026	185	11	0,191	1
216028	240	11	0,186	1
216030	300	11	0,200	1
216032	400	11	0,200	1

## Crimping dies DIN Cu + Al

Standard copper tube terminals and connectors, **hexagonal pressing**



Art. no.	mm <sup>2</sup>	PW	Al	ld.	kg	PU
216036	10	10		6	0,248	1
216038	16	10		8	0,248	1
216040	25	13		10	0,244	1
216042	35	13	16 - 25	12	0,235	1
216044	50	13	35	14	0,231	1
216046	70	13	50	16	0,226	1
216048	95	14	70	18	0,229	1
216050	120	14		20	0,225	1
216052	150	10	95 - 120	22	0,197	1
216054	185	10	150	25	0,193	1
216056	240	10	185	28	0,185	1
216060	300	10		32	0,142	1

## Dies for compacted connectors

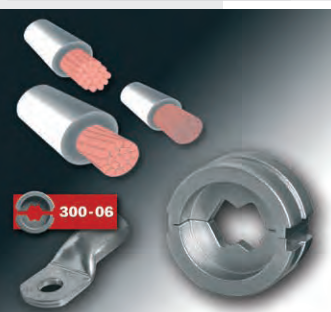
for standard cable lugs and compacted connectors



**400-C12**



Art. no.	mm <sup>2</sup>	PW	kg	PU
216008/V	10	10	0,211	1
216010/V	16	10	0,212	1
216012/V	25	10	0,210	1
216014/V	35	13	0,207	1
216016/V	50	13	0,224	1
216018/V	70	14	0,221	1
216020/V	95	14	0,226	1
216022/V	120	14	0,200	1
216024/V	150	11	0,200	1
216026/V	185	11	0,191	1
216028/V	240	11	0,186	1
216030/V	300	11	0,200	1
216032/V	400	11	0,200	1



## Crimping dies

Standard copper tube terminals and connectors, **mandrel shape crimping**



**400-C12**



Art. no.	mm <sup>2</sup>	kg	PU
216064	10	0,200	1
216066	16	0,120	1
216068	25	0,118	1
216070	35	0,116	1
216072	50	0,118	1
216074	70	0,131	1
216076	95	0,119	1
216078	120	0,111	1
216080	150	0,107	1
216082	185	0,095	1
216084	240	0,085	1
216086	300	0,060	1
216065	10 - 25	0,112	1
216067	35 - 50	0,121	1
216069	70 - 120	0,136	1
216071	150 - 300	0,125	1

## Crimping dies for cable class 5+6, F-Type

tubular terminals and connectors, F-Type



Art. no.	mm <sup>2</sup>	PW	kg	PU
216160	10	8	0,211	1
216162	16	8	0,216	1
216164	25	11	0,227	1
216168	50	13	0,232	1
216166	35	13	0,234	1
216170	70	13	0,111	1
216172	95	13	0,230	1
216174	120	20	0,247	1
216176	150	20	0,235	1
216178	185	8	0,190	1
216180	240	8	0,179	1
216182	300	8	0,126	1

## Crimping dies

for rounding of square connectors

**400-C12**



Art. no.	mm <sup>2</sup>	sm	se	kg	PU
216088	50	50	70	0,518	1
216090	70	70	95	0,505	1
216092	95	95	120	0,489	1
216094	120	120	150	0,474	1
216096	150	150	185	0,463	1
216098	185	185	240	0,441	1
216100	240	240	300	0,406	1

# Dies

## Crimping dies



for end sleeves and compacted conductors, **wave form**



**400-  
C12**



Art. no.	mm <sup>2</sup>	PW	kg	PU
216112	50	26	0,194	1
216114	70	26	0,200	1
216116	95	26	0,188	1
216118	120	26	0,200	1
216120	150	26	0,200	1
216122	185	26	0,200	1
216123	240	26	0,200	1

## Crimping dies



for insulated tube terminals, **oval pressing**



**400-  
C12**



Art. no.	mm <sup>2</sup>	PW	kg	PU
216126	10	5	0,200	1
216128	16	5	0,200	1
216130	25	5	0,220	1
216132	35	5	0,218	1
216134	50	5	0,200	1
216136	70	5	0,200	1
216138	95	5	0,200	1
216140	120	5	0,200	1
216142	150	5	0,200	1

## Crimping dies



C-connectors, **oval pressing**

**400-  
C12**



Art. no.	mm <sup>2</sup>	kg	PU
216148	16 - 25	0,218	1
216150	35	0,208	1
216152	50 - 70	0,260	1
216154	95	0,217	1
216156	120	0,261	1

## Pressing inserts „Deep Indend“ (AH-12/KH-12/HH-12)



for conduit terminals and connectors, **thorn pressing**



Art. no.	mm <sup>2</sup>		kg	PU
216552	50 - 70	cable lugs	0,211	1
216554	95 - 185	cable lugs	0,211	1
216556	240	cable lugs	0,211	1
216562	50 - 70	connectors	0,211	1
216564	95 - 185	connectors	0,211	1
216566	240	connectors	0,211	1

## Adapter pressing thorn



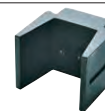
Art. no.	size	kg	PU
216570	1 - 4	0,211	1

## Pressing thorn



Art. no.	mm <sup>2</sup>	size	kg	PU
216574	50 - 70	1	0,211	1
216576	95 - 185	2	0,211	1
216578	240	4	0,211	1

## Holder for „Deep Indend“ pressing inserts



Art. no.	mm <sup>2</sup>	kg	PU
216580	50 - 185	0,211	1
216582	240	0,211	1