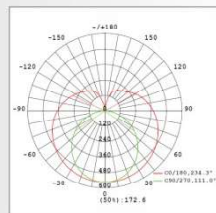
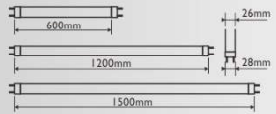
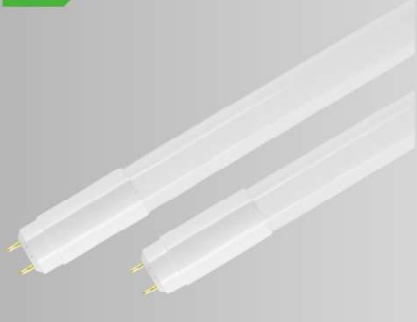


PRO PROTUBI LED T8 HI-LUMEN_UNIVERSAL

A++



PRO TUBI LED T8

codice	W	W	V	attacco	colore	lumen	fascio	imballo
code	W	W	V	base	colour	lumen	beam	packing
21537	8	18	220-240	G13	4000°K	1050	270°	25
21538	16	36	220-240	G13	4000°K	2250	270°	25
21533	23.5	58	220-240	G13	4000°K	3400	270°	25

I PRO Tubi T8 hanno un'ampissima compatibilità ed un elevato flusso luminoso. (140lm/W)

PRO T8 Tubes have got a very very wide compatibility and a high luminous output. (140lm/W)

• Sostituzione diretta T8 FLUO montato in apparecchio con alimentatore elettronico (vedi lista compatibilità pag 168/170).

• Direct retrofit of a T8 Fluorescent tube connected to an electronic ballast (see compatibility list on page 168/170)

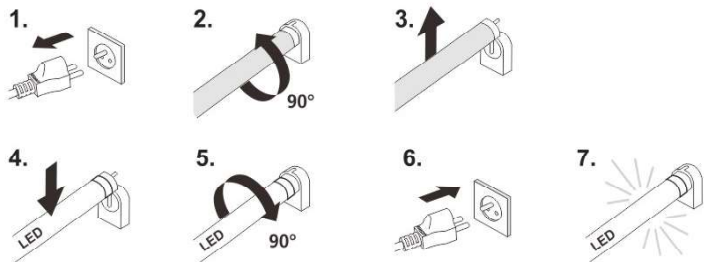
• Sostituzione diretta T8 FLUO montato in apparecchio con alimentatore elettromeccanico previa sostituzione starter (starter LED incluso con Tubo LED)

• Direct retrofit of a T8 Fluorescent tube connected to an electromagnetic ballast replacing the starter (LED starter included with the LED tube)

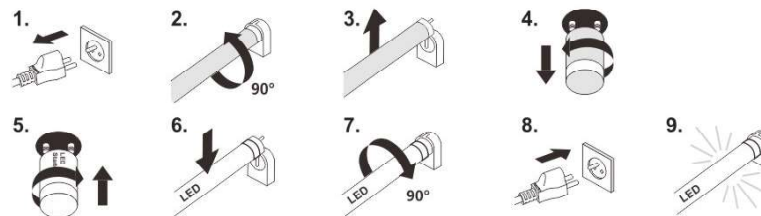
• Collegamento diretto alla tensione di rete. Verificare con cura la testata contrassegnata con AC e verificare schema foglio istruzioni.

• Direct connection to the mains voltage. Carefully check the cap marked with AC and see connection diagram on the instructions sheet.

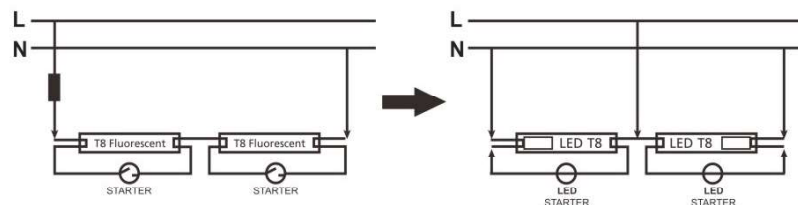
Electronic HF ballast | Reattore elettronico



Magnetic / CCG ballast | Reattore elettromeccanico



NEVER CONNECT LED TUBES IN SERIES
NON IMPIEGARE I TUBI LED PER INSTALLAZIONI IN SERIE:



Always bypass the ballast and connect LED tubes in parallel directly to the mains voltage.
Eliminare l'alimentatore e gli starter e collegare in parallelo i tubi LED direttamente alla tensione di rete.

220-240V AC / Direct mains | Alla tensione di rete

