



CASSETTA STAGNA IP66 PARETI LISCE – GRIGIO – CON VITI IN NYLON

IP66 ADAPTABLE BOX 240x190x90 – SMOOTH WALLS – COVER WITH NYLON SCREW



Dettaglio accessorio staffa di fissaggio: art. 1.940.ST
Detail accessory – Fixing bracket art. VA.1.940.ST



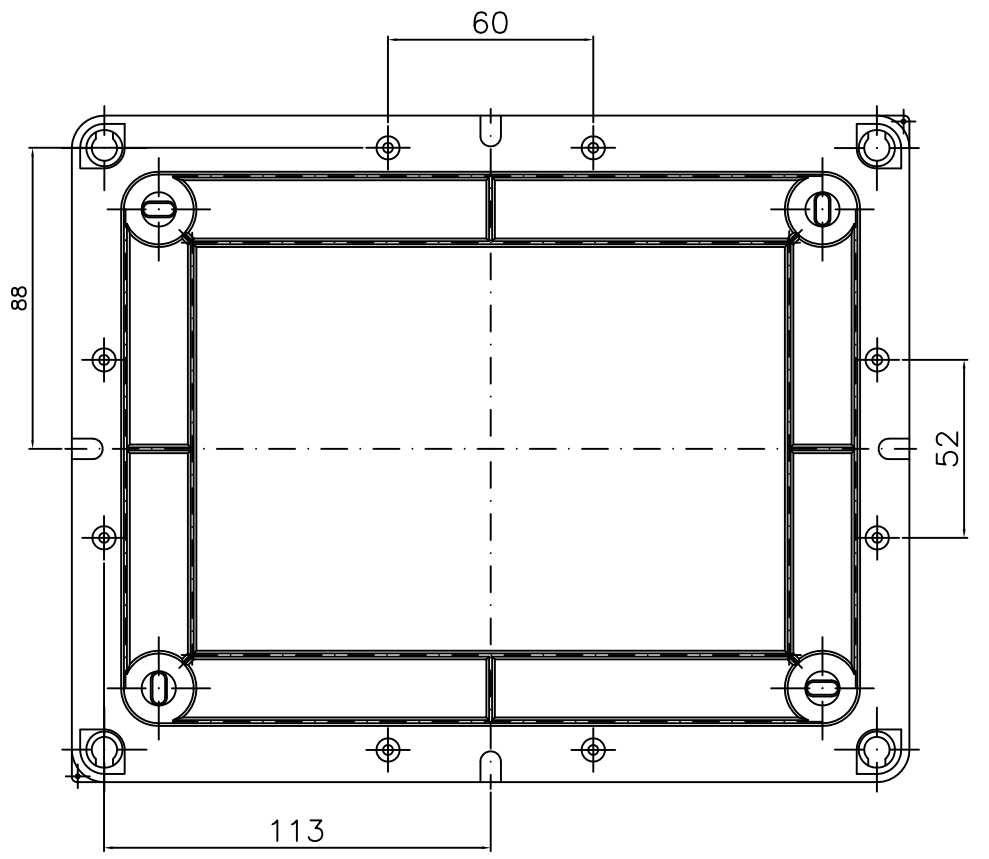
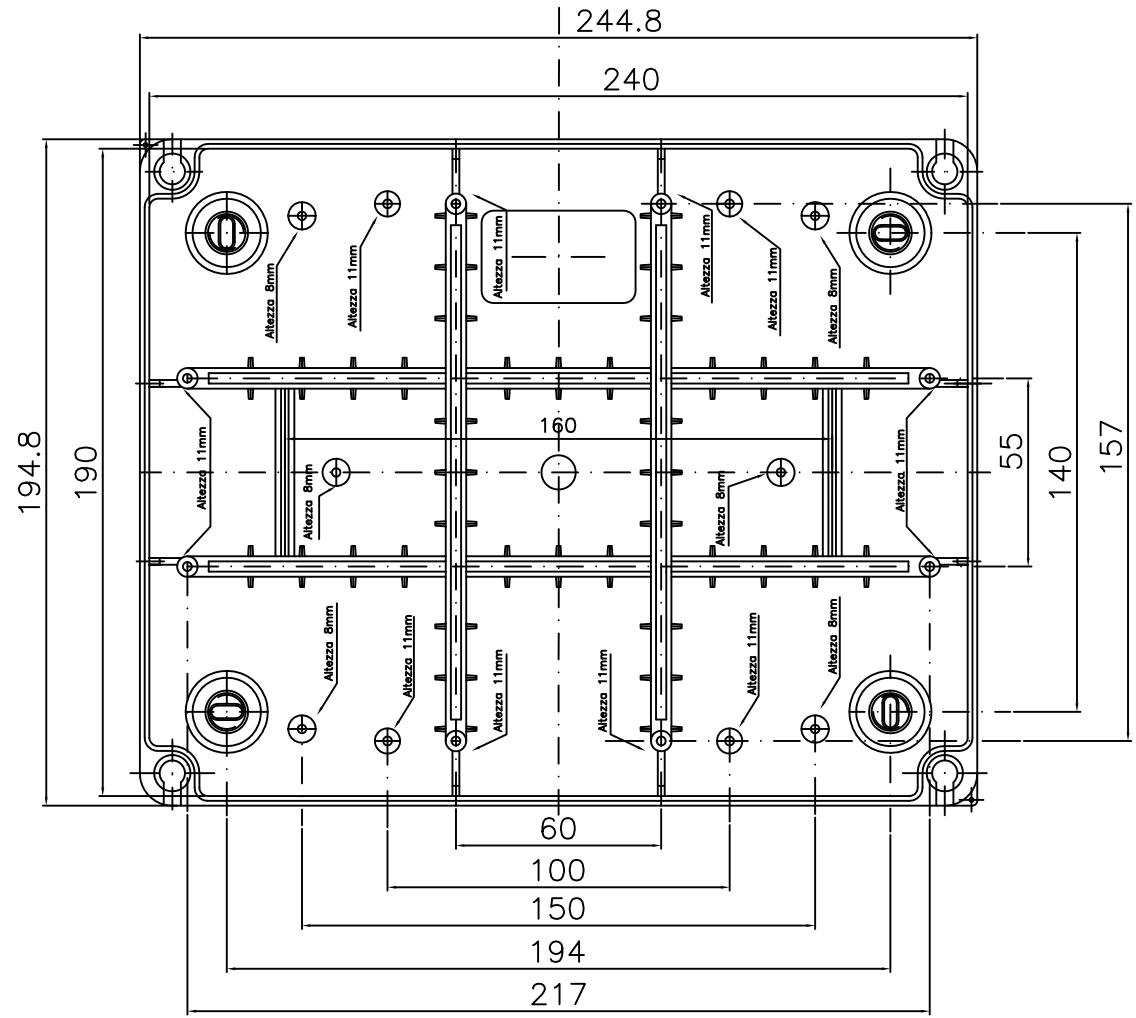
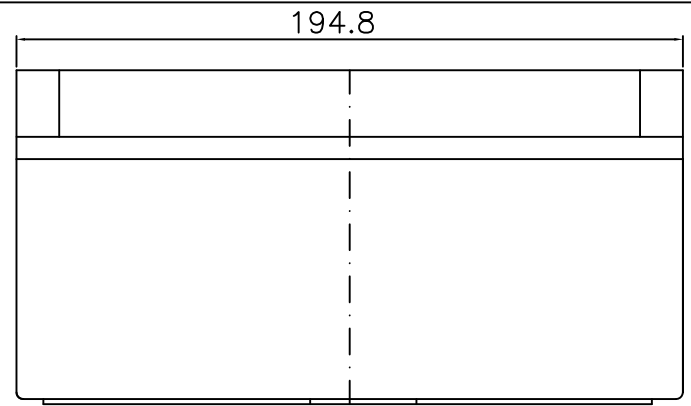
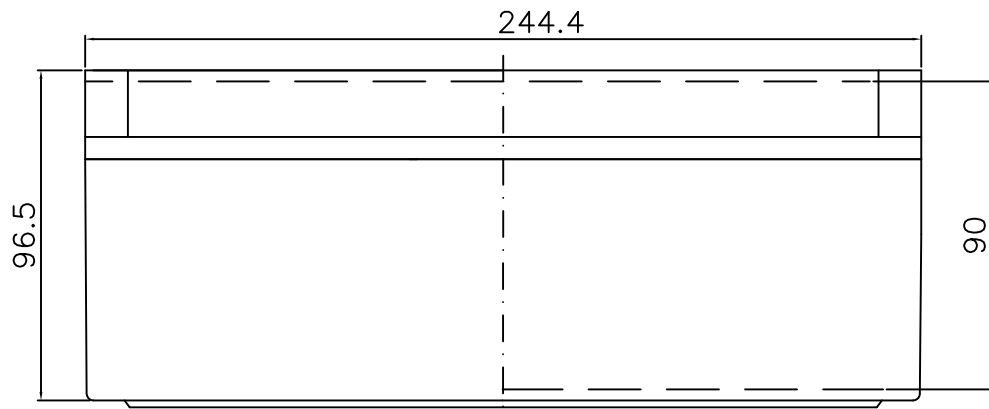
Dettaglio apertura coperchio a cerniera
Detail opening hinged lid




Set fissaggio per cassetta 010.A.PL: art. 1.010.A
Fixing kit for 010.A.PL box - art. 1.010.A

Un sistema esclusivo che permette di fissare la cassetta alla parete senza forare il fondo, mantenendo il grado di protezione invariato e il doppio isolamento in caso di fissaggio su supporti metallici.
An exclusive system of wedge that allows to fix the to the wall without perforating the bottom, maintaining the degree of protection unchanged and the double isolation in case of fixing on metallic supports.

CARATTERISTICHE TECNICHE / Technical features	
Dimensioni interne / Internal dimensions	240x190x90
Gradi di protezione / Degree of protection	IP66
Grado IK / IK degree	IK07
Resistenza al calore / Heat resistance	Glow wire 650°C
Colore / Color	Grigio / Grey RAL 7035
Temperatura di installazione / Installation Temperature	Max= +60°C – min.= -25°C
Normativa di riferimento / Standard	EN 60670-1:2005 EN 60670-22:2006
DOCUMENTAZIONE / Documentation	
Tabella dimensionale / Dimensional drawing	010_A_PL_TD



BOITE ETANCHE IP66 – PAROIS LISSES		 Marlanvil Industrie materiale elettrico
IP66 ADAPTABLE BOX – SMOOTH WALLS		
Cassetta Stagna IP66 Viti Nylon – pareti Lisce		Tel: 02-83.45.19.11 Fax: 02-83.45.19.99 -San Ferdinando di Puglia (BT) -Milano via Savotti, 17 E-mail: info@marlanvil.it
010.A.PL	010.A.PK	
010.A.PL.HT	010.A.PK.HT	
010.A.PL.VO	010.A.PK.VO	

03/02/2014