

Technical Data Sheet

CODE 10204

ANGOL K

In-Line centrifugal fans for kitchen cabinet
(UK EXP)



Certifications



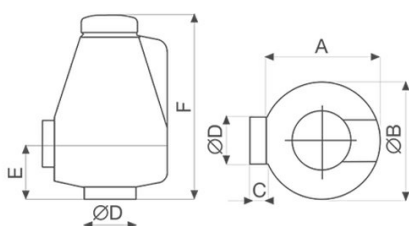
IMQ Performance



TECHNICAL AND PERFORMANCE DATA

Absorbed Current max (A)	0,16	Delivery 1st speed (l/s)	23,9
Absorbed power 1st speed (W)	29	Delivery 1st speed (m ³ /h)	86
Absorbed Power max (W)	35	Max delivery at max speed (l/s)	38,9
Frequency (Hz)	50	Max delivery at max speed (m ³ /h)	140
Insulation Class	II°	Pressure - 1st speed (mmH2O)	13,5
IP	X2	Pressure - 1st speed (Pa)	132
Max ambient temperature for continuous operation (°C)	40	Pressure max - max speed (mmH2O)	17
Max. absorbed Current at min. speed (A)	0,12	Pressure max - max speed (Pa)	157
Nominal Diameter (mm)	100	RPM max	2180
Ø Discharge Hole (mm)	97	RPM min	1410
Voltage (V)	220-240	Sound pressure level Lp [dB (A)] 3m - max speed	43
Weight (Kg)	1,27	Sound pressure level Lp [dB (A)] 3m - min speed	33

DIMENSIONS



Size A (mm)	168
Size B (mm)	Ø 176
Size C (mm)	25
Size D (mm)	Ø 97
Size E (mm)	93
Size F (mm)	281

PER INFORMAZIONI:

Servizio al Cliente: tel +39 02 90699395 premendo 1 dopo messaggio registrato (consulenza su prodotti e impianti)

Pre & Post Vendita: fax +39 02 90699302

Email prevendita: prevendita@vortice-italy.com

Technical Data Sheet

CODE 10204

ANGOL K

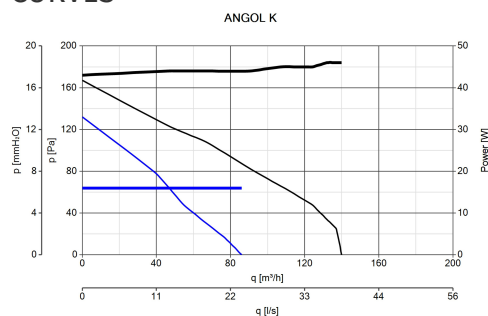
In-Line centrifugal fans for kitchen cabinet
(UK EXP)



DESCRIPTION

- Material: UV resistant plastic (prevents ageing caused by exposure to sunlight).
- Nominal diameter: 100 mm
- 2 speed motor with thermal overload protection and shaft turning in self-lubricating bushings, coupled to a centrifugal impeller.
- Minimum air flow 86 m³/h
- Maximum air flow: 140 m³/h
- Protective grille on inlet port
- IMQ SAFETY and IMQ PERFORMANCE certifications
- Vortice speed controller.

CURVES



ACCESSORIES



←

SCNRB
SCAT.COM.NON
REV.INCASSO
Code 12971



DEVIATORE DI
FLUSSO M 10/4
Code 22310



KIT SCB
(TRASF.E.C.)
Code 22481



CA-MU (STAFFE
DI SOSTEGNO)
Code 22674

→

PER INFORMAZIONI:

Servizio al Cliente: tel +39 02 90699395 premendo 1 dopo messaggio registrato (consulenza su prodotti e impianti)

Pre & Post Vendita: fax +39 02 90699302

Email prevendita: prevendita@vortice-italy.com