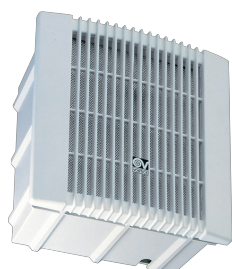


Technical Data Sheet

CODE 11972

VORT PRESS 140 LL I T

Centrifugal duct fans



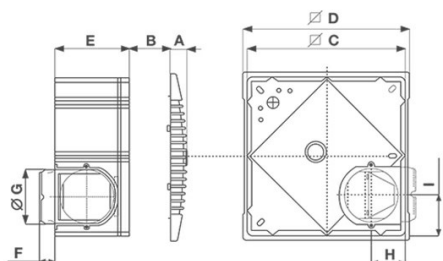
Certifications



TECHNICAL AND PERFORMANCE DATA

Absorbed Current max (A)	0,1	Max delivery of side outlet at max speed (l/s)	38,9
Absorbed power 1st speed (W)	16	Max delivery of side outlet at max speed (m ³ /h)	140
Absorbed Power max (W)	22	Max delivery of side outlet at min speed (l/s)	18,6
Frequency (Hz)	50	Max delivery of side outlet at min speed (m ³ /h)	67
Insulation Class	II°	Max pressure at side outlet - max speed (mmH2O)	22
IP	X4	Max pressure at side outlet - min speed (mmH2O)	8
Max ambient temperature for continuous operation (°C)	40	Max pressure at side outlet - min speed (Pa)	78
Max. absorbed Current at max. speed (A)	0,1	Max pressure at side outlet (Pa)	216
Max. absorbed Current at min. speed (A)	0,05	Pressure - 1st speed (mmH2O)	8
Max. absorbed power at max speed (W)	27	Pressure - 1st speed (Pa)	78
Nominal Diameter (mm)	100	Pressure max - max speed (mmH2O)	22
∅ Discharge Hole (mm)	97	Pressure max - max speed (Pa)	216
Voltage (V)	220-240	RPM max	1130
Weight (Kg)	2,9	RPM min	594
Delivery 1st speed (l/s)	15,3	RPM side air outlet - max speed	829
Delivery 1st speed (m ³ /h)	55	RPM side air outlet - min speed	450
Max delivery at max speed (l/s)	32,8	Sound pressure level Lp [dB (A)] 3m - max speed	38
Max delivery at max speed (m ³ /h)	118	Sound pressure level Lp [dB (A)] 3m - min speed	30

DIMENSIONS



Size A (mm)	28
Size B (mm)	65
Size C (mm)	284
Size D (mm)	300
Size E (mm)	133
Size F (mm)	28,5
Size G (mm)	∅ 97
Size H (mm)	62
Size I (mm)	71,5

PER INFORMAZIONI:

Servizio al Cliente: tel +39 02 90699395 premendo 1 dopo messaggio registrato (consulenza su prodotti e impianti)

Pre & Post Vendita: fax +39 02 90699302

Email prevendita: prevendita@vortice-italy.com

Technical Data Sheet

CODE 11972

VORT PRESS 140 LL I T

Centrifugal duct fans



DESCRIPTION

- Material: UV resistant plastic (prevents ageing caused by exposure to sunlight).
- Nominal diameter 100 mm
- 2 speed motor with thermal overload protection and shaft turning in ball bearings.
- Minimum air flow, rear outlet: 55 m³/h
- Maximum air flow, rear outlet: 118 m³/h
- Minimum air flow, side outlet: 67 m³/h
- Maximum air flow, side outlet: 140 m³/h
- Equipped with "smart" timer: when lights are switched on, the fan will start up after 40" approx; when lights are switched off, the fan stays on for between 30" and 30' (adjustable), running at minimum speed.
- Double motor-fan enclosure, antivibration mounts and non-return damper combining to ensure extremely quiet operation.
- Supplied with front grille mounting springs, suitable for any kind of false ceiling (65 mm max).
- Removable and washable metal mesh filter.
- Outlet port equipped with non-return damper.
- IMQ SAFETY and IMQ PERFORMANCE certifications
- Vortice speed controller.

ACCESSORIES



VP-C (KIT
STAFFE VORT
PRESS
140I/140IT)

Code 22815

PER INFORMAZIONI:

Servizio al Cliente: tel +39 02 90699395 premendo 1 dopo messaggio registrato (consulenza su prodotti e impianti)

Pre & Post Vendita: fax +39 02 90699302

Email prevendita: prevendita@vortice-italy.com