

# Technical Data Sheet

CODE 16187

## CA315MDE RF

Centrifugal duct fans for roof mounting



IMQ



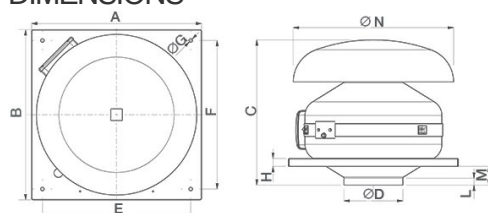
IMQ Performance



### TECHNICAL AND PERFORMANCE DATA

Absorbed power 1st speed (W)	48	Delivery 1st speed (l/s)	102.7
Frequency (Hz)	50/60	Delivery 1st speed (m <sup>3</sup> /h)	370
Insulation Class	II <sup>2</sup>	Max delivery at max speed (l/s)	240.2
IP	44	Max delivery at max speed (m <sup>3</sup> /h)	865
Max absorbed Power at 60Hz (W)	175	Pressure - 1st speed (mmH2O)	37.6
Max ambient temperature for continuous operation (°C)	50	Pressure - 1st speed (Pa)	368.9
Max. absorbed Current at max. speed (A)	0.57	Pressure max - max speed (mmH2O)	58.5
Max. absorbed Current at min. speed (A)	0.48	Pressure max - max speed (Pa)	573.7
Max. absorbed power at max speed (W)	130	RPM max	2590
Nominal Diameter (mm)	315	RPM min	1186
Voltage (V)	220-240	Sound pressure level Lp [dB (A)] 3m - max speed	40.7
Weight (Kg)	12	Sound pressure level Lp [dB (A)] 3m - min speed	32.8

### DIMENSIONS



Size A (mm)	489
Size B (mm)	489
Size C (mm)	415
Size D (mm)	ø312
Size E (mm)	435
Size F (mm)	435
Size G (mm)	ø 9
Size H (mm)	20
Size L (mm)	36
Size M (mm)	65
Size N (mm)	ø 534
Size O (mm)	252

#### PER INFORMAZIONI:

Servizio al Cliente: tel +39 02 90699395 premando 1 dopo messaggio registrato (consulenza su prodotti e impianti)

Pre & Post Vendita: fax +39 02 90699302

Email prevendita: [prevendita@vortice-italy.com](mailto:prevendita@vortice-italy.com)

# Technical Data Sheet

CODE 16187

## CA 315 MDE RF

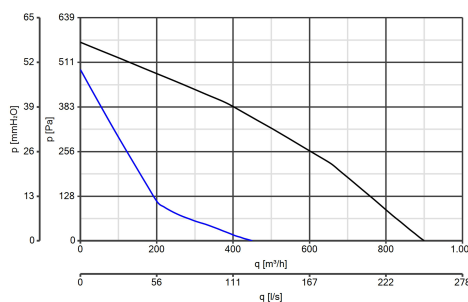
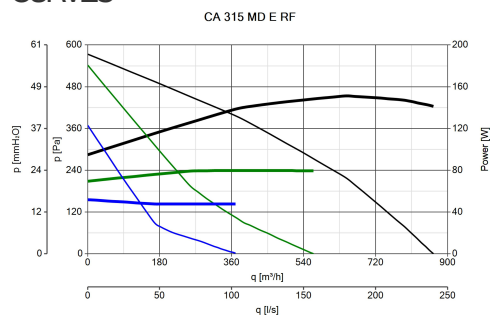
Centrifugal duct fans for roof mounting



### DESCRIPTION

- Pickled and phosphated steel housing/roof mounting plate with atmospheric agents.
- Nominal diameter 315 mm.
- 3 speed fan through TRIO-CA optional control (cod. 12869), consisting of:
  - External rotor AC motor with thermal overload cutout and shaft turning in ball bearings,
  - backward curved impeller.
- Operation controllable by remote sensors monitoring: Temperature, Relative Humidity, Smoke and Presence.
- Zinc-coated steel brackets for wall mounting.

### CURVES



### ACCESSORIES



**TRIO-CA**  
Code 12869



**KIT SCB  
(TRASF.E.C.)**  
Code 22481



**CA-G 315  
(GRIGLIA DI  
PROTEZIONE)**  
Code 22775



**C 1.5  
(COMANDO EL.  
1.5A)**  
Code 12966

#### PER INFORMAZIONI:

Servizio al Cliente: tel +39 02 90699395 premando 1 dopo messaggio registrato (consulenza su prodotti e impianti)  
Pre & Post Vendita: fax +39 02 90699302  
Email prevendita: prevendita@vortice-italy.com