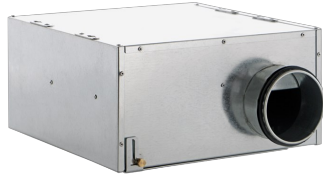


Technical Data Sheet

CODE 16253

CA IL 160 Q

Compact flat in-line centrifugal fans



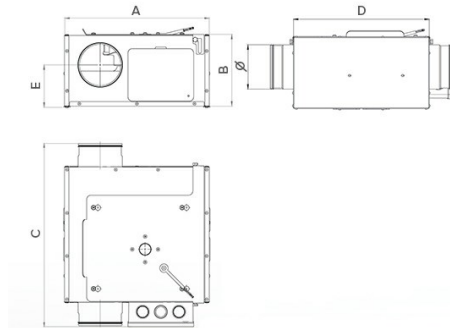
Certifications



TECHNICAL AND PERFORMANCE DATA

| | | | |
|---|------|--|------|
| Frequency (Hz) | 50 | Number of speeds | 3 |
| Insulation Class | I° | Voltage (V) | 230 |
| Max ambient temperature for continuous operation (°C) | 40 | Weight (Kg) | 6 |
| Motor Class | B | Delivery max (l/s) | 97 |
| Motor IP protection | 44 | Delivery max (m³/h) | 350 |
| Nominal Current at max speed (A) | 0,23 | Pressure max (mmH2O) | 30,6 |
| Nominal Current at min speed (A) | 0,16 | Pressure max (Pa) | 300 |
| Nominal Diameter (mm) | 160 | Sound power level - radiated Lw [dB(A)] | 54 |
| Nominal Power at max speed (W) | 50 | Sound power level exhaust inlet Lw [dB(A)] | 62 |
| Nominal Power at min speed (W) | 18 | Sound power level supply outlet Lw [dB(A)] | 63 |

DIMENSIONS



| | |
|-----------------|-----|
| Diametro Ø (mm) | 160 |
| Size A (mm) | 390 |
| Size B (mm) | 198 |
| Size C (mm) | 467 |
| Size D (mm) | 362 |
| Size E (mm) | 98 |

PER INFORMAZIONI:

Servizio al Cliente: tel +39 02 90699395 premendo 1 dopo messaggio registrato (consulenza su prodotti e impianti)

Pre & Post Vendita: fax +39 02 90699302

Email prevendita: prevendita@vortice-italy.com

Technical Data Sheet

CODE 16253

CA IL 160 Q

Compact flat in-line centrifugal fans



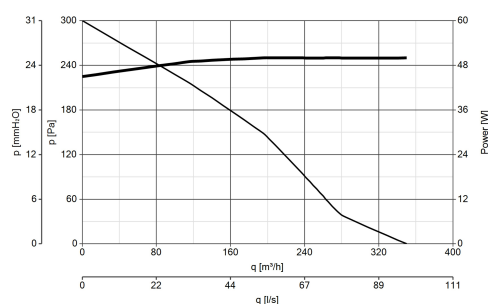
DESCRIPTION

- Casing and motor-support made of galvanized sheet steel; lined internally with PE sound-proof panel (thickness 10 mm).
- Circular spigots for connection to standard tubes, equipped with double lip rubber seal for perfect air tightness.
- Nominal diameter: 160 mm.
- External rotor AC motorfan, with shaft turning in ball bearings, coupled to a backward curved centrifugal impeller.
- Galvanized steel sheet brackets, directly coupled to casing.
- Electric connection box accomodating capacitors, molded with shock-proof plastic resin resistant against aggressive agents, integrating cable

cages and cable glands to ensure high protection (IP55) against dust and water.

- 3 alternative installation: wall, ceiling and false-ceiling.
- Easy maintenance: motor is directly fixed to the cover, in turn hinged to the casing, allowing easy external rotation and motorfan direct access.
- Protection against dust and water: IP44.
- Electric insulation class: I (grounding is required).

CURVES



ACCESSORIES



←

TRA 250
(TELAIO CON
RETE ANTINF.)
Code 51150



PGR 250
(PERSIANA
GRAVITA')
Code 50150



C 1.5
(COMANDO EL.
1.5 A)
Code 12966



GR 160
Code 21180

→

PER INFORMAZIONI:

Servizio al Cliente: tel +39 02 90699395 premendo 1 dopo messaggio registrato (consulenza su prodotti e impianti)

Pre & Post Vendita: fax +39 02 90699302

Email prevendita: prevendita@vortice-italy.com