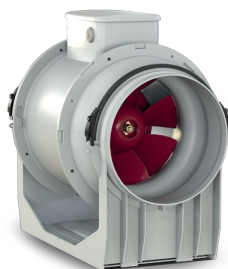


# Technical Data Sheet

CODE 17144

## LINEO 100

Mixed flow extractor fans



### Certifications

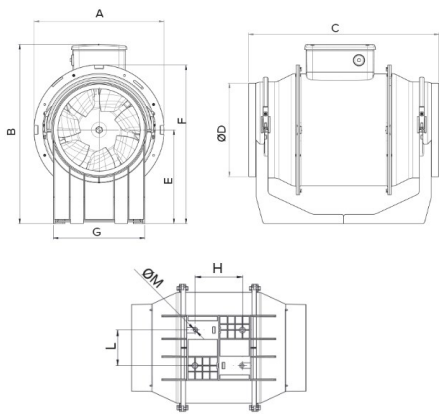


CB TEST CERTIFICATE

## Technical and performance data

Frequency (Hz)	50	Breakout sound pressure at 3m at Min speed Lp [dB (A)]	21,2
Insulation class	II°	Max airflow at Max speed (l/s)	70,8
IP	44	Max airflow at Max speed (m³/h)	255
Max absorbed current at Max speed (A)	0,11	Max pressure at Max speed (mmH2O)	16,5
Max absorbed current at Min speed (A)	0,09	Max pressure at Max speed (Pa)	161,9
Max absorbed power at Max speed (W)	23	Max RPM	2030
Max ambient temperature for continuous operation (°C)	60	Min RPM	1520
Nominal diameter (mm)	100	Potenza sonora at supply side at Min speed LWA [dB (A)]	45,6
Power absorbed at 1st speed (W)	20	Pressure at 1st speed (mmH2O)	13
Voltage (V)	220-240	Pressure at 1st speed (Pa)	127,5
Weight (Kg)	2	Sound power at extract side at Max speed LWA [dB (A)]	56,6
Airflow at 1st speed (l/s)	50	Sound power at extract side at Min speed LWA [dB (A)]	49,5
Airflow at 1st speed (m³/h)	180	Sound power at supply side at Max speed LWA [dB (A)]	53,6
Breakout sound power LWA at Max speed [dB (A)]	50,0	Sound pressure at extract side at 3m at Max speed Lp [dB (A)]	39,0
Breakout sound power LWA at Min speed [dB (A)]	41,6	Sound pressure at extract side at 3m at Min speed Lp [dB (A)]	31,9
Breakout sound pressure at 3m at Max speed Lp [dB (A)]	29,5	Sound pressure at supply side at 3m at Max speed Lp [dB (A)]	36,1
		Sound pressure at supply side at 3m at Min speed Lp [dB (A)]	28,0

## Dimensions



Size A (mm)	188,5
Size B (mm)	211
Size C (mm)	303
Size D (mm)	96
Size E (mm)	101,5
Size F (mm)	189
Size G (mm)	90
Size H (mm)	80
Size L (mm)	60
Size M (mm)	5,5

## PER INFORMAZIONI / FOR INFORMATION

### ITALY

Pre Sales:

[prevendita@vortice-italy.com](mailto:prevendita@vortice-italy.com)

After Sales:

[postvendita@vortice-italy.com](mailto:postvendita@vortice-italy.com)

### UNITED KINGDOM & REP. OF

#### IRELAND

Sales Dept:

[sales@vortice.ltd.uk](mailto:sales@vortice.ltd.uk)

Technical Dept:

[technical@vortice.ltd.uk](mailto:technical@vortice.ltd.uk)

### OTHER COUNTRIES

Sales Dept:

[export@vortice-italy.com](mailto:export@vortice-italy.com)

After Sales:

[after-sales@vortice-italy.com](mailto:after-sales@vortice-italy.com)

# Technical Data Sheet

CODE 17144

## LINEO 100

Mixed flow extractor fans

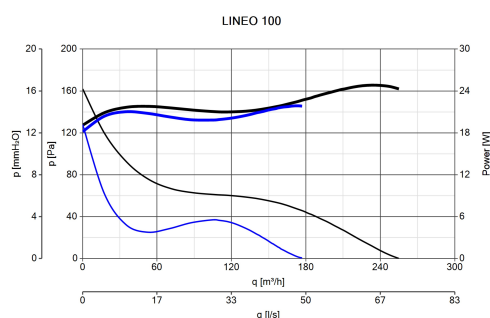


## Description

- Enclosures made of fire resistant plastic resin, E2 class, according with ISO EN 11925-2: 2010, in areas close to motor and electrical components.
- Nominal diameter 100 mm.
- Induction motor, thermally protected, with shaft mounted on ball

- bearing supports, coupled with a centrifugal impeller.
- High water resistance: IPX5 (if installed in a duct).
- Speed adjustable through Vortice speed devices.

## Curves



## Accessories



### C PIR

Code 12998



### C TEMP

Code 12992



### C SMOKE

Code 12993



### C HCS

Code 12994



### C TIMER

Code 12999



### DUO

Code 22914



### LINEO-G 100

Code 22701



### LINEO-PF 100

Code 22577



### IN-LINE-S 100

Code 22551



### LINEO-C 100

Code 22584



### C 1.5 (COMANDO EL.)

**1.5 A)**

Code 12966



**KIT SCB  
(TRASF.E.C.)**

Code 22481

PER INFORMAZIONI / FOR INFORMATION

ITALY

Pre Sales:

[prevendita@vortice-italy.com](mailto:prevendita@vortice-italy.com)

After Sales:

[postvendita@vortice-italy.com](mailto:postvendita@vortice-italy.com)

UNITED KINGDOM & REP. OF  
IRELAND

Sales Dept:

[sales@vortice.ltd.uk](mailto:sales@vortice.ltd.uk)

Technical Dept:

[technical@vortice.ltd.uk](mailto:technical@vortice.ltd.uk)

OTHER COUNTRIES

Sales Dept:

[export@vortice-italy.com](mailto:export@vortice-italy.com)

After Sales:

[after-sales@vortice-italy.com](mailto:after-sales@vortice-italy.com)