

# Technical Data Sheet

CODE 42309

## MPC-E 302 T

Medium-pressure long cased axial fans



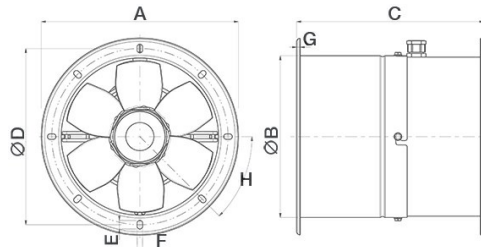
CE



### TECHNICAL AND PERFORMANCE DATA

Absorbed Current max (A)	1.00	Number of Poles	2
Absorbed Power max (W)	360	Voltage (V)	400
Frequency (Hz)	50	Weight (Kg)	12,3
Insulation Class	I°	Delivery max (l/s)	805
IP	X4	Delivery max (m³/h)	2900
Max ambient temperature for continuous operation (°C)	70	Pressure max (mmH2O)	60.0
Min ambient temperature for continuous operation (°C)	-25	Pressure max (Pa)	588
Nominal Diameter (mm)	300	RPM	2940
Number of Phases (Ph)	3	Sound power level Lw [dB(A)]	79.2
		Sound Pressure level Lp [dB (A)] 3m	58.7

### DIMENSIONS



Size A (mm)	ø 393
Size B (mm)	ø 316
Size C (mm)	330
Size D (mm)	ø 366
Size E (mm)	14
Size F (mm)	9
Size G (mm)	4
Size H (mm)	45°

#### PER INFORMAZIONI:

Servizio al Cliente: tel +39 02 90699395 premendo 1 dopo messaggio registrato (consulenza su prodotti e impianti)

Pre & Post Vendita: fax +39 02 90699302

Email prevendita: [prevendita@vortice-italy.com](mailto:prevendita@vortice-italy.com)

# Technical Data Sheet

CODE 42309

## MPC-E 302 T

Medium-pressure long cased axial fans

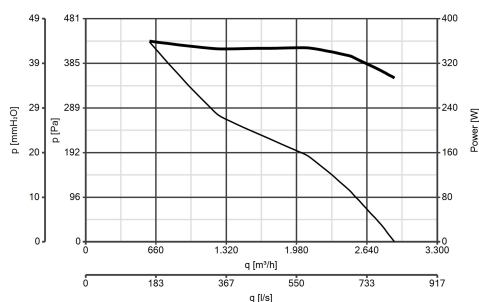


### DESCRIPTION

- Nominal diameter 300 mm
- 1 speed three-phase AC motor with shaft turning in double shielded ball bearings, insulation class F.

- Keyed to a diecast aluminium hub.
- Vortice speed controller.

### CURVES



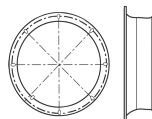
### ACCESSORIES



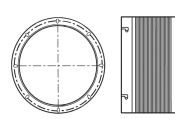
**IRT 35**  
Code 12924



**IRET 6**  
Code 12934



**MPC BO 300**  
**(BOCCAGLIO)**  
Code 22536



**MPC RA 300**  
**(RACCORDO FLESSIBILE)**  
Code 22517

#### PER INFORMAZIONI:

Servizio al Cliente: tel +39 02 90699395 premando 1 dopo messaggio registrato (consulenza su prodotti e impianti)  
Pre & Post Vendita: fax +39 02 90699302  
Email prevendita: prevendita@vortice-italy.com