

# Technical Data Sheet

CODE 45621

## VORT NRG EVO 500 V

Cross flow heat recovery units



## Certifications

### TECHNICAL AND PERFORMANCE DATA

Absorbed Power max (W)	335	Motor IP protection	54
Filter class for extract air	G4	Nominal Diameter (mm)	200
Filter class for supply air	F7	Number of Phases (Ph)	1
Frequency (Hz)	50	Voltage (V)	230
Max ambient temperature for continuous operation (°C)	-5 +40	Weight (Kg)	96
Motor Class	B	Delivery max (m <sup>3</sup> /h)	568
		Sound Pressure level Lp [dB (A)] 3m	56

### DIMENSIONS

Size A (mm)	1400
Size B (mm)	970
Size C (mm)	400
Size G (mm)	320
Size H (mm)	210
Size I (mm)	210

#### PER INFORMAZIONI:

Servizio al Cliente: tel +39 02 90699395 premendo 1 dopo messaggio registrato (consulenza su prodotti e impianti)

Pre & Post Vendita: fax +39 02 90699302

Email prevendita: [prevendita@vortice-italy.com](mailto:prevendita@vortice-italy.com)

# Technical Data Sheet

CODE 45621

## VORT NRG EVO 500 V

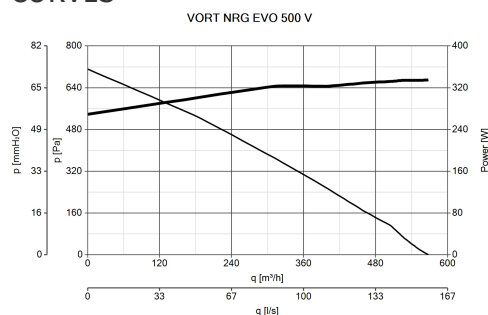
Cross flow heat recovery units



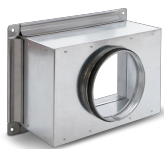
### DESCRIPTION

- Frames consisting of aluminium profiles; double skin (sandwich), 6/10 panels (inner side with galvanized steel sheet, outer side with pre-lacquered metal sheet (RAL 9002) with protective film); insulation through 23 mm polyurethane foam, 40 kg/m<sup>3</sup> density.
- 2 EC motors, independently adjustable, external rotor type, integrating safety thermal cut-outs, with backward curved impellers directly driven by ball bearings.
- Air-to-air, counter cross-flow, aluminium made heat exchanger whose high performance, certified by Eurovent, exceeds 90% according to EN 308 Standard.
- 100% inner automatic by-pass.
- 2 filters, respectively G4 on extracted air (stale) and F7 on (fresh) air supply, both mounted upstream of inner components, on runners fitted with lip seals to ensure effective air tightness.
- Access to filters and inner components by removable panels.
- Feet for floor fixing crimped into the structure.
- Dedicated pressure switch constantly controls the airflow across each fan, showing possible filters clogging.
- A local circuit breaker, mounted on front panel, allows to stop the unit in case of fault.
- Wired control panel with integrated potentiometers to independently adjust each fan speed and equipped with lights group showing:
  - clogged filters,
  - by-pass activation when in free-cooling mode,
  - external electric pre-heater activation (if installed as optional).

### CURVES



### ACCESSORIES



NRG EC 500

NPK

Code 79874



NRG EVO 500

ABC

Code 68581



NRGEVO500

RRC

Code 68825

#### PER INFORMAZIONI:

Servizio al Cliente: tel +39 02 90699395 premendo 1 dopo messaggio registrato (consulenza su prodotti e impianti)

Pre & Post Vendita: fax +39 02 90699302

Email prevendita: [prevendita@vortice-italy.com](mailto:prevendita@vortice-italy.com)