

Technical Data Sheet

CODE 45625

VORT NRG EVO 1500 V

Cross flow heat recovery units



Certifications

TECHNICAL AND PERFORMANCE DATA

Absorbed Power max (W)	1480	Motor IP protection	55
Filter class for extract air	G4	Nominal Diameter (mm)	315
Filter class for supply air	F7	Number of Phases (Ph)	1
Frequency (Hz)	50	Voltage (V)	230
Max ambient temperature for continuous operation (°C)	-5 +40	Weight (Kg)	176
Motor Class	F	Delivery max (m ³ /h)	1969
		Sound Pressure level Lp [dB (A)] 3m	65

DIMENSIONS

Size A (mm)	1980
Size B (mm)	1200
Size C (mm)	470
Size G (mm)	390
Size H (mm)	310
Size I (mm)	310

PER INFORMAZIONI:

Servizio al Cliente: tel +39 02 90699395 premendo 1 dopo messaggio registrato (consulenza su prodotti e impianti)

Pre & Post Vendita: fax +39 02 90699302

Email prevendita: prevendita@vortice-italy.com

Technical Data Sheet

CODE 45625

VORT NRG EVO 1500 V

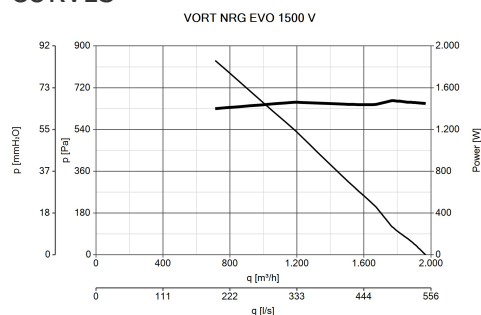
Cross flow heat recovery units



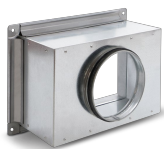
DESCRIPTION

- Frames consisting of aluminium profiles; double skin (sandwich), 6/10 panels (inner side with galvanized steel sheet, outer side with pre-lacquered metal sheet (RAL 9002) with protective film); insulation through 23 mm polyurethane foam, 40 kg/m³ density.
- 2 EC motors, independently adjustable, external rotor type, integrating safety thermal cut-outs, with backward curved impellers directly driven by ball bearings.
- Air-to-air, counter cross-flow, aluminium made heat exchanger whose high performance, certified by Eurovent, exceeds 90% according to EN 308 Standard.
- 100% inner automatic by-pass.
- 2 filters, respectively G4 on extracted air (stale) and F7 on (fresh) air supply, both mounted upstream of inner components, on runners fitted with lip seals to ensure effective air tightness.
- Access to filters and inner components by removable panels.
- Feet for floor fixing crimped into the structure.
- Dedicated pressure switch constantly controls the airflow across each fan, showing possible filters clogging.
- A local circuit breaker, mounted on front panel, allows to stop the unit in case of fault.
- Wired control panel with integrated potentiometers to independently adjust each fan speed and equipped with lights group showing:
 - clogged filters,
 - by-pass activation when in free-cooling mode,
 - external electric pre-heater activation (if installed as optional).

CURVES



ACCESSORIES



NRG EC 1500
NPK
Code 79876



NRG EVO 1500
ABC
Code 68583



NRGEVO1500
RRC
Code 68827

PER INFORMAZIONI:

Servizio al Cliente: tel +39 02 90699395 premendo 1 dopo messaggio registrato (consulenza su prodotti e impianti)
Pre & Post Vendita: fax +39 02 90699302
Email prevendita: prevendita@vortice-italy.com