

# Technical Data Sheet

CODE 45628

## VORT NRG EVO 3000

Cross flow heat recovery units



## Certifications

---

### TECHNICAL AND PERFORMANCE DATA

Absorbed Power max (W)	2240	Motor IP protection	55
Filter class for extract air	G4	Nominal Diameter (mm)	355
Filter class for supply air	F7	Number of Phases (Ph)	1
Frequency (Hz)	50	Voltage (V)	400
Max ambient temperature for continuous operation (°C)	-5 +40	Weight (Kg)	300
Motor Class	F	Delivery max (m <sup>3</sup> /h)	3530
		Sound Pressure level Lp [dB (A)] 3m	65

### DIMENSIONS

Size A (mm)	2400
Size B (mm)	1550
Size C (mm)	680
Size G (mm)	600
Size H (mm)	310
Size I (mm)	310

#### PER INFORMAZIONI:

Servizio al Cliente: tel +39 02 90699395 premendo 1 dopo messaggio registrato (consulenza su prodotti e impianti)

Pre & Post Vendita: fax +39 02 90699302

Email prevendita: [prevendita@vortice-italy.com](mailto:prevendita@vortice-italy.com)

# Technical Data Sheet

CODE 45628

## VORT NRG EVO 3000

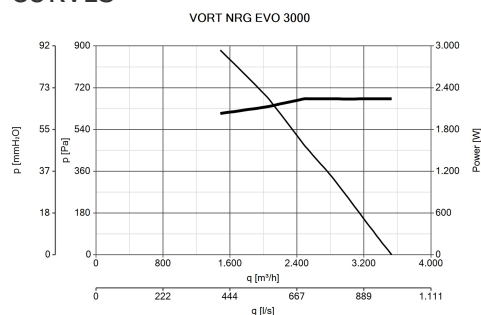
Cross flow heat recovery units



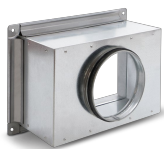
### DESCRIPTION

- Frames consisting of aluminium profiles; double skin (sandwich), 6/10 panels (inner side with galvanized steel sheet, outer side with pre-lacquered metal sheet (RAL 9002) with protective film); insulation through 23 mm polyurethane foam, 40 kg/m<sup>3</sup> density.
- 2 EC motors, independently adjustable, external rotor type, integrating safety thermal cut-outs, with backward curved impellers directly driven by ball bearings.
- Air-to-air, counter cross-flow, aluminium made heat exchanger whose high performance, certified by Eurovent, exceeds 90% according to EN 308 Standard.
- 100% inner automatic by-pass.
- 2 filters, respectively G4 on extracted air (stale) and F7 on (fresh) air supply, both mounted upstream of inner components, on runners fitted with lip seals to ensure effective air tightness.
- Access to filters and inner components by removable panels.
- Brackets for ceiling fixing crimped into the structure.
- Dedicated pressure switch constantly controls the airflow across each fan, showing possible filters clogging.
- A local circuit breaker, mounted on front panel, allows to stop the unit in case of fault.
- Wired control panel with integrated potentiometers to independently adjust each fan speed and equipped with lights group showing:
  - clogged filters,
  - by-pass activation when in free-cooling mode,
  - external electric pre-heater activation (if installed as optional).

### CURVES



### ACCESSORIES



**NRG EC 3000**

**NPK**

Code 79878



**NRG EVO 3000**

**ABC**

Code 68585

#### PER INFORMAZIONI:

Servizio al Cliente: tel +39 02 90699395 premendo 1 dopo messaggio registrato (consulenza su prodotti e impianti)

Pre & Post Vendita: fax +39 02 90699302

Email prevendita: [prevendita@vortice-italy.com](mailto:prevendita@vortice-italy.com)