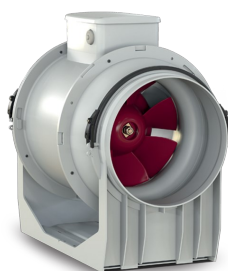


# Technical Data Sheet

CODE 17189

## LINEO 200 Q T

Mixed flow extractor fans



### Certifications

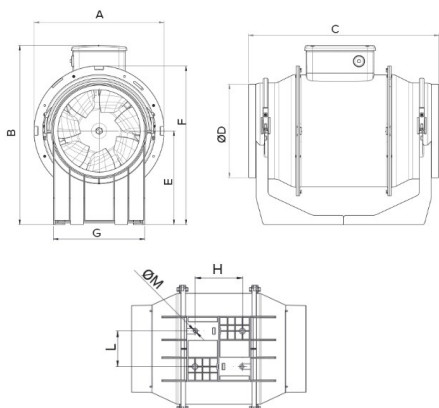


CB TEST CERTIFICATE

## Technical and performance data

Frequency (Hz)	50	Max airflow at Max speed (l/s)	263,9
Insulation class	II°	Max airflow at Max speed (m³/h)	950
IP	44	Max pressure at Max speed (mmH2O)	29
Max absorbed current at Max speed (A)	0,37	Max pressure at Max speed (Pa)	284,5
Max absorbed current at Min speed (A)	0,22	Max RPM	2740
Max absorbed power at Max speed (W)	75	Min RPM	1780
Max ambient temperature for continuous operation (°C)	60	Potenza sonora at supply side at Min speed LWA [dB (A)]	59,5
Power absorbed at 1st speed (W)	45	Pressure at 1st speed (mmH2O)	13
Voltage (V)	220-240	Pressure at 1st speed (Pa)	127,5
Weight (Kg)	4,3	Sound power at extract side at Max speed LWA [dB (A)]	68,0
Airflow at 1st speed (l/s)	194,4	Sound power at extract side at Min speed LWA [dB (A)]	61,9
Airflow at 1st speed (m³/h)	700	Sound power at supply side at Max speed LWA [dB (A)]	68,3
Breakout sound power LWA at Max speed [dB (A)]	57,4	Sound pressure at extract side at 3m at Max speed Lp [dB (A)]	50,4
Breakout sound power LWA at Min speed [dB (A)]	47,1	Sound pressure at extract side at 3m at Min speed Lp [dB (A)]	44,4
Breakout sound pressure at 3m at Max speed Lp [dB (A)]	36,9	Sound pressure at supply side at 3m at Max speed Lp [dB (A)]	50,7
Breakout sound pressure at 3m at Min speed Lp [dB (A)]	26,6	Sound pressure at supply side at 3m at Min speed Lp [dB (A)]	42,0

## Dimensions



Size A (mm)	234,5
Size B (mm)	266
Size C (mm)	300
Size D (mm)	196
Size E (mm)	125,5
Size F (mm)	235
Size G (mm)	140
Size H (mm)	100
Size L (mm)	94
Size M (mm)	5,5

PER INFORMAZIONI / FOR INFORMATION

UNITED KINGDOM & REP. OF

#### ITALY

Pre Sales:

[prevendita@vortice-italy.com](mailto:prevendita@vortice-italy.com)

After Sales:

[postvendita@vortice-italy.com](mailto:postvendita@vortice-italy.com)

#### IRELAND

Sales Dept:

[sales@vortice.ltd.uk](mailto:sales@vortice.ltd.uk)

Technical Dept:

[technical@vortice.ltd.uk](mailto:technical@vortice.ltd.uk)

#### OTHER COUNTRIES

Sales Dept:

[export@vortice-italy.com](mailto:export@vortice-italy.com)

After Sales:

[after-sales@vortice-italy.com](mailto:after-sales@vortice-italy.com)

# Technical Data Sheet

CODE 17189

## LINEO 200 Q T

Mixed flow extractor fans

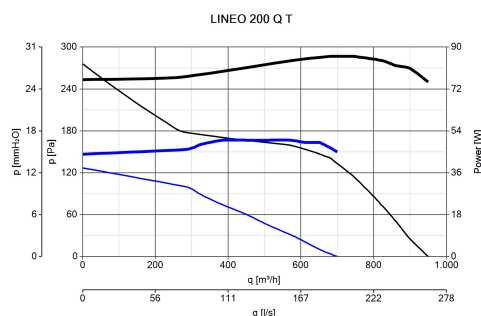


## Description

- Enclosures made of fire resistant plastic resin, E2 class, according with ISO EN 11925-2: 2010, in areas close to motor and electrical components.
- Nominal diameter 200 mm.
- Induction motor, thermally protected, with shaft mounted on ball bearing supports, coupled with a centrifugal impeller.

- Equipped with an electronic timer for automatic operation at maximum speed, which can be set in the 3-20' range at the installation (default setting 3').
- High water resistance: IPX5 (if installed in a duct).
- Speed adjustable through Vortice speed devices.

## Curves



## Accessories



### LINEO-G 200

Code 22705



### DUO

Code 22914



### LINEO-SF 500

Code 22593



### IREM D

Code 12867



### LINEO-C 200

Code 22588



### LINEO-PF 200

Code 22582



### IN-LINE-S 200

Code 22566

## PER INFORMAZIONI / FOR INFORMATION

### ITALY

Pre Sales:

[prevendita@vortice-italy.com](mailto:prevendita@vortice-italy.com)

After Sales:

[postvendita@vortice-italy.com](mailto:postvendita@vortice-italy.com)

### UNITED KINGDOM & REP. OF

IRELAND

Sales Dept:

[sales@vortice.ltd.uk](mailto:sales@vortice.ltd.uk)

Technical Dept:

[technical@vortice.ltd.uk](mailto:technical@vortice.ltd.uk)

### OTHER COUNTRIES

Sales Dept:

[export@vortice-italy.com](mailto:export@vortice-italy.com)

After Sales:

[after-sales@vortice-italy.com](mailto:after-sales@vortice-italy.com)

