

## K RANGE

### IN-LINE CENTRIFUGAL FANS FOR KITCHEN CABINET

## K RANGE

### In-line centrifugal fans for kitchen cabinet

One or two-speed centrifugal duct fans, ideal for ventilating small and medium-size residential and commercial premises. The AXIAL K model is designed for suction in-line with the exhaust, while the ANGOL K model instead allows for 90° exhaust with respect to suction.

#### Key features

- Excellent performance/price ratio
- Easy, fast installation.
- ANGOL K equipped with a 2-speed motor to adapt the performance provided to the actual current needs.

#### Version

2 models, both the nominal diameter 100 mm, designed for in-line exhaust or 90° rotated exhaust with respect to the suction.

#### Technical features

- White, shock-proof, plastic resin casings prevent ageing caused by exposure to sunlight ("UV resistant"). Protective grilles integrated into the air inlets
- Heat-protected motors, two-speed in ANGOL K, with shafts mounted on bushings with self-centring and self-lubricating neck to keep sound emissions down and guarantee regular product operation for durations suitable to typical applications. Speed adjustment using VORTICE accessory devices.
- Centrifugal impellers moulded in plastic resin, resistant to aggressive agents, with optimised profile blades to combine high performance with considerable flow rate levels
- Performance and safety certified by third party body (IMQ)
- Class of electric isolation: II ⊞ (earthing not required).



**Awards**  
1991 Italian Golden Compass  
honor award



Design: F. Trabucco - M. Vecchi



## TECHNICAL DATA

MODELS	CODE	V~50HZ	W min/max	A min/max	RPM min/max	MAX AIRFLOW		MAX PRESSURE		Lp dB(A)* 3m min/max	MAX °C**	KG
						m³/h min/max	l/s min/max	mmH₂O min/max	Pa min/max			
ANGOL K	10204	220-240	29 35	0.12 0.16	1410 2180	86 140	23.9 38.9	13.5 17	132 157	33 43	40	1.27
AXIAL K	10904	220-240	27	0.13	2560	135	37.5	17	167	41	40	1.20

\* Data refers to both speeds. Measurement taken in front of the intake port with outlet connected and unobstructed extraction. Conforms with ISO 3744 for noise and pressure levels.



## K RANGE | TECHNICAL DATA FOR REGULATION N° 1254/2014/UE

	UNIT OF MEASURE	ANGOL K	AXIAL K
Supplier's name or trade mark	-	VORTICE	VORTICE
Specific Energy Consumption class SEC in average climate zone	-	NA	NA
Specific Energy Consumption class SEC average	-	-2.2	-1.8
Specific Energy Consumption class SEC cold	kWh/m <sup>2</sup> year	-10.9	-10.5
Specific Energy Consumption class SEC warm	-	10.1	10.5
Declared typology	-	RVU-U*	RVU-U*
Type of drive	-	NA	NA
Type of heat recovery system HRS	-	none	none
Thermal efficiency of heat recovery at reference air flow	%	NA	NA
Maximum flow rate	m <sup>3</sup> /h	75	78
Electric power input of the fan drive, including any motor control equipment, at maximum flow rate	W	29.2	27.0
Sound power level LWA	LWA [DB(A)]	62	64
Reference flow rate	m <sup>3</sup> /s	0.0146	0.0152
Reference pressure difference	Pa	82	129
SPI	W/(m <sup>3</sup> /h)	0.47619	0.48901
Control factor CTRL	-	1	1
Control typology	-	manual	manual
Maximum internal leakage rates	%	NA	NA
Maximum external leakage rates	%	NA	NA
Mixing rate	-	NA	NA
Position and description of visual filter warning	-	NA	NA
Airflow sensitivity to pressure variations at + 20 Pa and - 20 Pa	-	NA	NA
Indoor/outdoor air tightness	m <sup>3</sup> /h	NA	NA
Annual electricity consumption (AEC)	kWh electricity/year	597	613
AHS average Annual heating saved	-	1715	1715
AHS cold Annual heating saved	kWh primary energy/year	2732	2732
AHS warm Annual heating saved	-	632	632

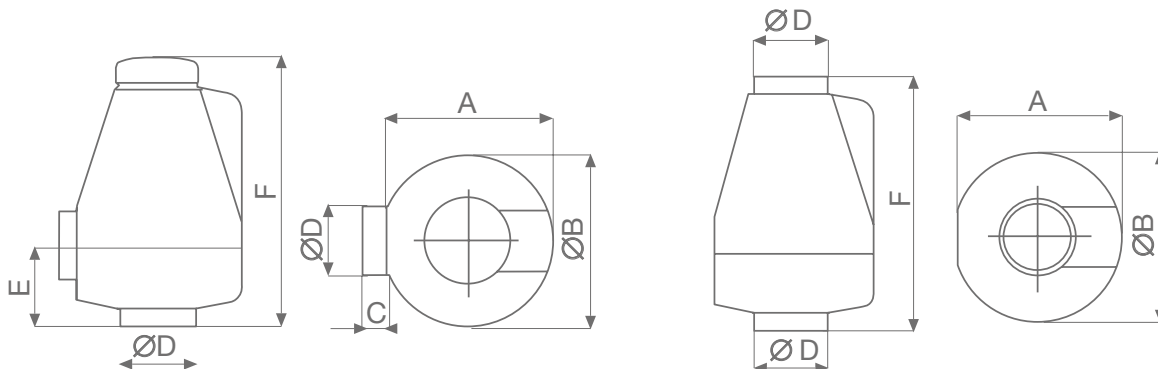
\* RVU-U: Unit Ventilation Residential - Unidirectional

\*\* NRUVU-U: Unit Ventilation Non Residential - Unidirectional

\*\*\* MSD: Multi-Speed Drive

NA: Not applicable

## DIMENSIONS



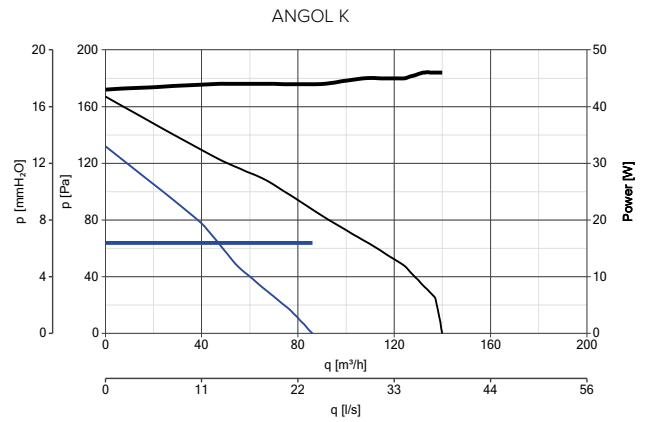
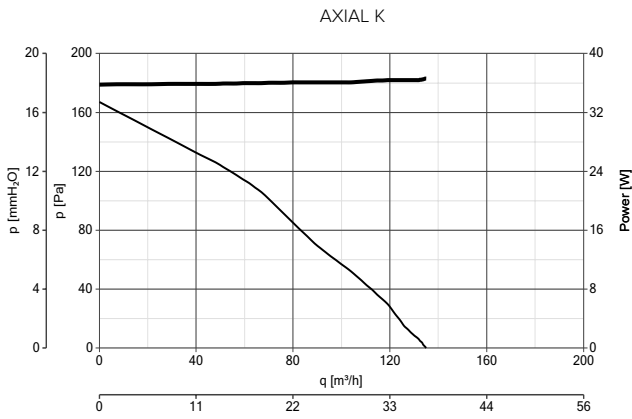
MODELS	øA	øB	C	øD	E	F
ANGOL K	168	176	25	97	93	281
AXIAL K	168	176	-	97	-	270

Dimensions (mm)

## K RANGE

### IN-LINE CENTRIFUGAL FANS FOR KITCHEN CABINET




## PERFORMANCE CURVES





POWER CONSUMPTION  
— max  
— min

PERFORMANCE CURVES  
— max  
— min

## CONTROLLER

MODELS	DESCRIPTION	CODE	PRODUCT
	<b>C 1.5</b> - Electronic speed controller 1.5 A	12966	ALL PRODUCTS
	<b>SCNRB</b> - Electronic speed controller built-in	12971	ALL PRODUCTS
	<b>SCB KIT</b> - Built-in controller adaptor for C 1.5	22481	12966

## ACCESSORIES ON REQUEST

MODELS	DESCRIPTION	CODE	PRODUCT	
	<b>AIR DEFLECTOR</b>	100/4	22310	ALL PRODUCTS
	<b>CA MU</b> - Galvanized sheet-metal brackets	22674	22674	ALL PRODUCTS