



## VORT QBK POWER RANGE

### Sound-proof double inlet cabinet fans

#### PRODUCT SPECIFICATIONS

*Design for ducted ventilation applications. Suitable for internal or external installations..*

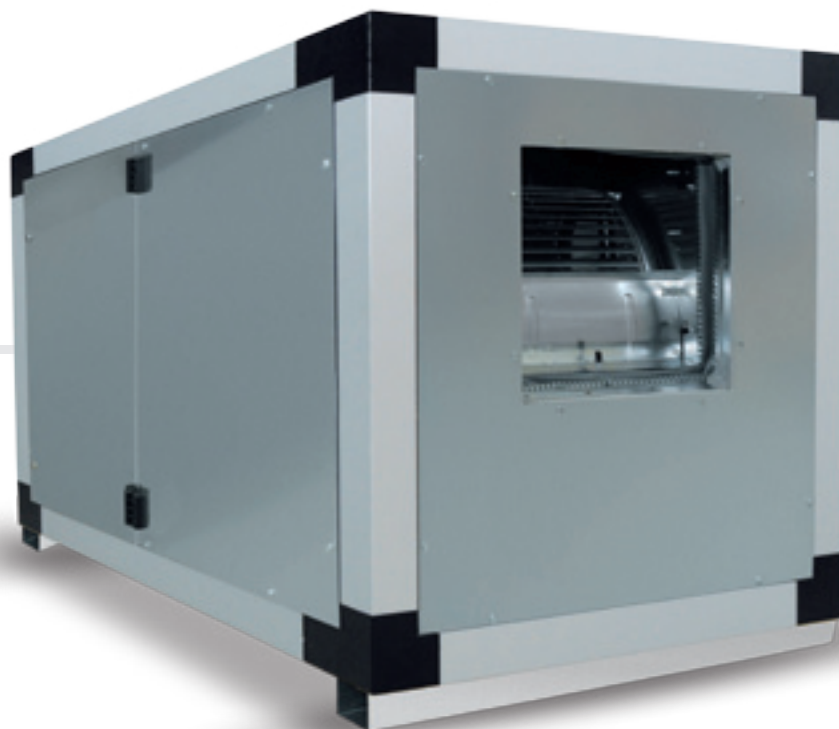
LONG LIFE 30.000 h



- 27 models one-speed (upon request) and 28 models two-speed (upon request).
- Flow rates up to 30000 m<sup>3</sup>/h.
- Extruded aluminium frames assembled with diecast aluminium joints.
- Zinc-coated, sound-proof frames in polyethylene padding, with metal and adhesive finishing, class I.
- One or two-speed three-phase motors, depending on model.
- Belt driven double inlet centrifugal fans equipped with forward curves centrifugal impellers.
- Access through removeable panels or hinged door depending on model.
- Operating temperature between -20°C and +40°C. Operation at higher temperatures allowed, accepting a power drop.
- Designed for ducted ventilation applications.
- Suitable for internal or external installations.
- Insulation class: I ⊕ .

Fans used in VORT QBK POWER Range comply with ErP N° 327/2011/UE.





TECHNICAL DATA

Models	Code	Speed	V ~ 50 Hz	kW nom.	A nom.	RPM	Max Airflow m3/h	Lp (dBA)* 1m max	Kg	Amb temp. max (°C)	Motor Class	IP Motor
VORT QBK POWER 9/7 1V 0.75	45303	1	230	0.75	1.93	1030	2500	69	58	40	F	55
VORT QBK POWER 9/9 1V 0.75	45306		230	0.75	1.93	1590	3500	72	62	40	F	
VORT QBK POWER 9/9 1V 1.1	45307		230	1.1	2.64	1600	3500	73	62	40	F	
VORT QBK POWER 10/10 1V 0.75	45309		230	0.75	1.93	1050	4500	71	83	40	F	
VORT QBK POWER 10/10 1V 1.1	45310		230	1.1	2.64	1345	4500	73	83	40	F	
VORT QBK POWER 10/10 1V 1.5	45311		230	1.5	3.45	1360	4500	74	83	40	F	
VORT QBK POWER 12/12 1V 0.75	45312		230	0.75	1.93	735	5000	68	104	40	F	
VORT QBK POWER 12/12 1V 1.1	45313		230	1.1	2.64	1020	6000	71	104	40	F	
VORT QBK POWER 12/12 1V 1.5	45314		230	1.5	3.45	1150	7000	75	104	40	F	
VORT QBK POWER 12/12 1V 2.2	45315		230	2.2	4.84	1150	7000	76	104	40	F	
VORT QBK POWER 15/15 1V 1.1	45316		230	1.1	2.64	640	7000	70	139	40	F	
VORT QBK POWER 15/15 1V 1.5	45317		230	1.5	3.45	740	9000	73	139	40	F	



# VORT QBK POWER RANGE

## Sound-proof double inlet cabinet fans

TECHNICAL DATA

Models	Code	Speed	V ~ 50 Hz	kW nom.	A nom.	RPM	Max Airflow m³/h	Lp (dBA)* 1m max	Kg	Amb temp. max (°C)	Motor Class	IP Motor
VORT QBK POWER 15/15 1V 2.2	45318	1	230	2.2	4.84	950	10000	77	139	40	F	55
VORT QBK POWER 15/15 1V 3	45319		230	3	6.47	960	10000	78	139	40	F	
VORT QBK POWER 18/18 1V 1.5	45320		230	1.5	3.45	520	10000	72	208	40	F	
VORT QBK POWER 18/18 1V 2.2	45321		230	2.2	4.84	730	14000	79	208	40	F	
VORT QBK POWER 18/18 1V 3	45322		230	3	6.47	820	14000	79	208	40	F	
VORT QBK POWER 18/18 1V 4	45323		230	4	8.26	820	14000	82	208	40	F	
VORT QBK POWER 18/18 1V 5.5	45324		230	5.5	11.03	820	14000	82	208	40	F	
VORT QBK POWER 560 1V 3	45325		230	3	6.47	600	18000	73	276	40	F	
VORT QBK POWER 560 1V 4	45326		230	4	8.26	670	20000	76	276	40	F	
VORT QBK POWER 560 1V 5.5	45327		230	5.5	11.03	770	22000	78	276	40	F	
VORT QBK POWER 560 1V 7.5	45328		230	7.5	14.64	790	22000	79	276	40	F	
VORT QBK POWER 630 1V 4	45329		230	4	8.26	460	22000	73	276	40	F	
VORT QBK POWER 630 1V 5.5	45330		230	5.5	11.03	600	27000	78	348	40	F	
VORT QBK POWER 630 1V 7.5	45331		230	7.5	14.64	670	27000	80	348	40	F	
VORT QBK POWER 630 1V 11	45333		230	11	20.64	700	27000	81	348	40	F	



TECHNICAL DATA

Models	Code	Speed	V ~ 50 Hz	kW nom.	A nom.	RPM	Max Airflow m³/h	Lp (dBA)* 1m max	Kg	Amb temp. max (°C)	Motor Class	IP Motor
VORT QBK POWER 9/7 2V 0.55	45342	2	400	0.5-0.19	1.4-0.7	1520	2500	72	58	40	F	55
VORT QBK POWER 9/7 2V 0.75	45343		400	0.66-0.25	1.75-0.8	1490	2500	73	58	40	F	
VORT QBK POWER 9/9 2V 0.55	45345		400	0.5-0.19	1.4-0.7	1420	3500	72	62	40	F	
VORT QBK POWER 9/9 2V 0.75	45346		400	0.66-0.25	1.75-0.8	1590	3500	72	62	40	F	
VORT QBK POWER 9/9 2V 1.1	45347		400	1-0.3	2.5-1.2	1600	3500	73	62	40	F	
VORT QBK POWER 10/10 2V 0.55	45348		400	0.5-0.19	1.4-0.7	895	3500	72	83	40	F	
VORT QBK POWER 10/10 2V 0.75	45349		400	0.66-0.25	1.75-0.8	1050	4500	71	83	40	F	
VORT QBK POWER 10/10 2V 1.1	45350		400	1-0.3	2.5-1.2	1345	4500	73	83	40	F	
VORT QBK POWER 10/10 2V 1.5	45351		400	1.5-0.45	3.5-1.6	1360	4500	74	83	40	F	
VORT QBK POWER 12/12 2V 0.75	45352		400	0.66-0.25	1.75-0.8	735	5000	68	104	40	F	
VORT QBK POWER 12/12 2V 1.1	45353		400	1-0.3	2.5-1.2	1020	6000	71	104	40	F	
VORT QBK POWER 12/12 2V 1.5	45354		400	1.5-0.45	3.5-1.6	1150	7000	75	104	40	F	
VORT QBK POWER 12/12 2V 2.2	45355		400	2-0.6	4.5-2	1150	7000	76	104	40	F	
VORT QBK POWER 15/15 2V 1.1	45356		400	1-0.3	2.5-1.2	640	7000	70	139	40	F	
VORT QBK POWER 15/15 2V 1.5	45357		400	1.5-0.45	3.5-1.6	740	9000	73	139	40	F	
VORT QBK POWER 15/15 2V 2.2	45358		400	2-0.6	4.5-2	950	10000	77	139	40	F	
VORT QBK POWER 15/15 2V 3	45359		400	3-1	6.3-3.1	960	10000	78	139	40	F	
VORT QBK POWER 18/18 2V 1.5	45360		400	1.5-0.45	3.5-1.6	520	10000	72	208	40	F	
VORT QBK POWER 18/18 2V 2.2	45361		400	2-0.6	4.5-2	730	14000	79	208	40	F	
VORT QBK POWER 18/18 2V 3	45362		400	3-1	6.3-3.1	820	14000	79	208	40	F	
VORT QBK POWER 18/18 2V 4	45363		400	4.5-1.5	9.2-5.1	820	14000	82	208	40	F	
VORT QBK POWER 18/18 2V 5.5	45364		400	6-2	12-5.6	820	14000	82	208	40	F	
VORT QBK POWER 560 2V 3	45365		400	3-1	6.3-3.1	600	18000	73	276	40	F	
VORT QBK POWER 560 2V 4	45366		400	4.5-1.5	9.2-5.1	670	20000	76	276	40	F	
VORT QBK POWER 560 2V 5.5	45367		400	6-2	12-5.6	770	22000	78	276	40	F	
VORT QBK POWER 630 2V 4	45369		400	4.5-1.5	9.2-5.1	460	22000	73	348	40	F	
VORT QBK POWER 630 2V 5.5	45370		400	6-2	12-5.6	600	27000	78	348	40	F	
VORT QBK POWER 630 2V 11	45373		400	10.5-3.5	21-8.6	700	27000	81	348	40	F	

NOTE: Operation at higher temperatures is also possible. At higher temperatures however, there is a drop in power (contact our technical-sales office).

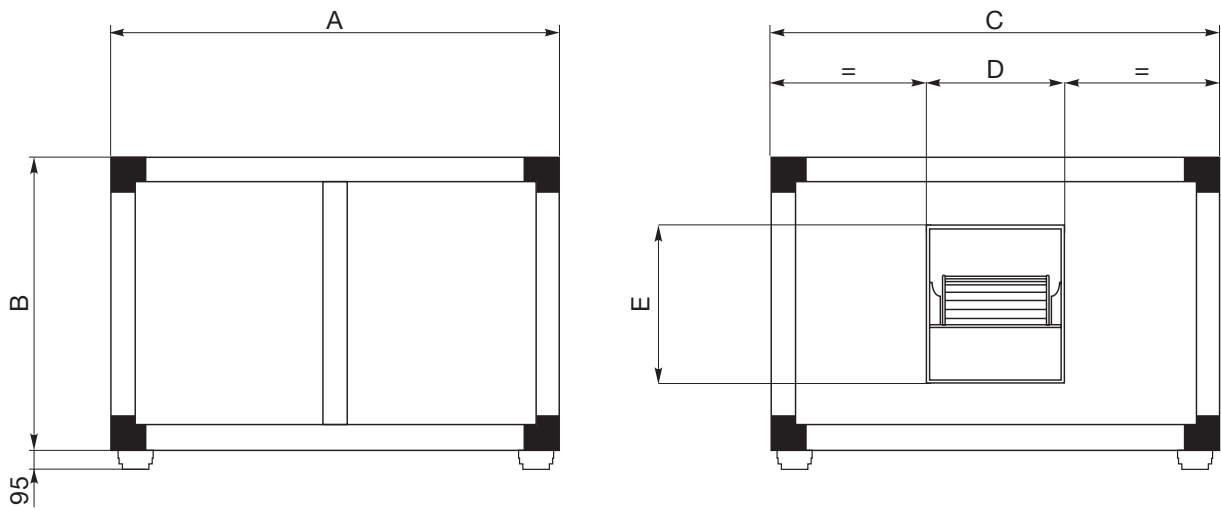
\* Sound pressure level measured at 1 m in free field conditions.



# VORT QBK POWER RANGE

## Sound-proof double inlet cabinet fans

### DIMENSIONS



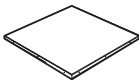
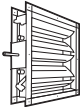
Models	A	B	C	D	E
VORT QBK POWER 9/7	790	600	600	235	265
VORT QBK POWER 9/9				300	
VORT QBK POWER 10/10	1040	700	700	335	295
VORT QBK POWER 12/12		790	790	395	340
VORT QBK POWER 15/15		1040	1040	470	405
VORT QBK POWER 18/18	1290	1290	1290	560	480
VORT QBK POWER 560	1540			640	640
VORT QBK POWER 630		1540	1540	1540	720

Dimensions (mm)

NOTE: The overall dimensions of QBK POWER are indicative since they are subject to change upon final order confirmation. In case the unit is fitted with the filtering section accessory, dimension A will increase by 250 mm.



ACCESSORIES



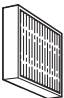
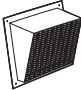
	Description	Code	Product
	QBK RRC POWER 9/7 - 9/9 Rain guard	24215	45300 - 45301 - 45302 - 45303 - 45304 - 45305 - 45306 - 45307 45340 - 45341 - 45342 - 45343 - 45344 - 45345 - 45346 - 45347
	QBK RRC POWER 10/10 Rain guard	24216	45308 - 45309 - 45310 - 45311 45348 - 45349 - 45350 - 45351
	QBK RRC POWER 12/12 Rain guard	24217	45312 - 45313 - 45314 - 45315 - 45352 - 45353 - 45354 - 45355
	QBK RRC POWER 15/15 Rain guard	24218	45316 - 45317 - 45318 - 45319 - 45356 - 45357 - 45358 - 45359
	QBK RRC POWER 18/18 Rain guard	24219	45320 - 45321 - 45322 - 45323 - 45324 - 45360 - 45361 - 45362 45363 - 45364
	QBK RRC POWER 560 Rain guard	24220	45325 - 45326 - 45327 - 45328 - 45365 - 45366 - 45367 - 45368
	QBK RRC POWER 630 Rain guard	24221	45329 - 45330 - 45331 - 45332 - 45333 - 45369 - 45370 - 45371 45372 - 45373
	QBK VCD POWER 9/7 - 9/9 Adjustment shutter	24222	45300 - 45301 - 45302 - 45303 - 45304 - 45305 - 45306 - 45307 45340 - 45341 - 45342 - 45343 - 45344 - 45345 - 45346 - 45347
	QBK VCD POWER 10/10 Adjustment shutter	24223	45308 - 45309 - 45310 - 45311 45348 - 45349 - 45350 - 45351
	QBK VCD POWER 12/12 Adjustment shutter	24224	45312 - 45313 - 45314 - 45315 - 45352 - 45353 - 45354 - 45355
	QBK VCD POWER 15/15 Adjustment shutter	24225	45316 - 45317 - 45318 - 45319 - 45356 - 45357 - 45358 - 45359
	QBK VCD POWER 18/18 Adjustment shutter	24226	45320 - 45321 - 45322 - 45323 - 45324 - 45360 - 45361 - 45362 45363 - 45364
	QBK VCD POWER 560 Adjustment shutter	24227	45325 - 45326 - 45327 - 45328 - 45365 - 45366 - 45367 - 45368
	QBK VCD POWER 630 Adjustment shutter	24228	45329 - 45330 - 45331 - 45332 - 45333 - 45369 - 45370 - 45371 45372 - 45373

Accessories of cabinet VORT QBK POWER cannot be ordered separately but only in association with them. The required accessories will be mounted directly on the cabinets prior to delivery.

# VORT QBK POWER RANGE

## Sound-proof double inlet cabinet fans

ACCESSORIES

	Description	Code	Product
	QBK IG 9/7 - 9/9 Intake grille	24230	45300 - 45301 - 45302 - 45303 - 45304 - 45305 - 45306 - 45307 45340 - 45341 - 45342 - 45343 - 45344 - 45345 - 45346 - 45347
	QBK IG 10/10 Intake grille	24231	45308 - 45309 - 45310 - 45311 45348 - 45349 - 45350 - 45351
	QBK IG 12/12 Intake grille	24232	45312 - 45313 - 45314 - 45315 - 45352 - 45353 - 45354 - 45355
	QBK IG 15/15 Intake grille	24233	45316 - 45317 - 45318 - 45319 - 45356 - 45357 - 45358 - 45359
	QBK IG 18/18 Intake grille	24234	45320 - 45321 - 45322 - 45323 - 45324 - 45360 - 45361 - 45362 45363 - 45364
	QBK IG 560 Intake grille	24235	45325 - 45326 - 45327 - 45328 - 45365 - 45366 - 45367 - 45368
	QBK IG 630 Intake grille	24236	45329 - 45330 - 45331 - 45332 - 45333 - 45369 - 45370 - 45373
	QBK SS Safety micro-switch	24237	for all models
	QBK VDP 9 - 10 - 12 - 15 - 18 Variable pulley	24238	45300 - 45301 - 45302 - 45303 - 45304 - 45305 - 45306 - 45307 - 45340 - 45341 - 45342 - 45343 - 45344 - 45345 - 45346 - 45347
	QBK VDP 560 - 630 Variable pulley	24239	45325 - 45326 - 45327 - 45328 - 45329 - 45330 - 45331 - 45332 45333 - 45365 - 45366 - 45367 - 45368 - 45369 - 45370 - 45373
	QBK FS 9/7 - 9/9 Filtering section	24240	45300 - 45301 - 45302 - 45303 - 45304 - 45305 - 45306 45307 - 45342 - 45343 - 45345 - 45346 - 45347
	QBK FS 10/10 Filtering section	24241	45308 - 45309 - 45310 - 45311 45348 - 45349 - 45350 - 45351
	QBK FS 12/12 Filtering section	24242	45312 - 45313 - 45314 - 45315 - 45352 - 45353 - 45354 - 45355
	QBK FS 15/15 Filtering section	24243	45316 - 45317 - 45318 - 45319 - 45356 - 45357 - 45358 - 45359
	QBK FS 18/18 Filtering section	24244	45320 - 45321 - 45322 - 45323 - 45324 - 45360 - 45361 - 45362 - 45363 - 45364
	QBK FS 560 Filtering section	24245	45325 - 45326 - 45327 - 45328 - 45365 - 45366 - 45367 - 45368
	QBK FS 630 Filtering section	24246	45329 - 45330 - 45331 - 45332 - 45333 - 45369 - 45370 - 45372 - 45373
	QBK ABC 7/7 - 9/9 Filtering section	24200	45301 - 45302 - 45303 - 45304 - 45305 - 45306 - 45307 - 45342 45343 - 45345 - 45346 - 45347
	QBK ABC 10/10 - 12/12 Air cowling	24202	45308 - 45309 - 45310 - 45311 - 45348 - 45349 - 45350 - 45351 45312 - 45313 - 45314 - 45315 - 45352 - 45353 - 45354 - 45355

Accessories of cabinet VORT QBK POWER cannot be ordered separately but only in association with them. The required accessories will be mounted directly on the cabinets prior to delivery.





Cod. 5.170.084.994

09/15

Vortice Elettrosociali S.p.A  
Strada Cerca, 2  
Frazione di Zoate  
20067 Tribiano (Milano)  
Tel. (+39) 02 906991  
Fax (+39) 02 90699314  
Italia  
[www.vortice.com](http://www.vortice.com)  
[export@vortice-italy.com](mailto:export@vortice-italy.com)

Vortice France  
15-33, Rue Le Corbusier  
CS 30007  
94046 Créteil Cedex  
Tél. (+33) 1.55.12.50.00  
Fax (+33) 1.55.12.50.01  
France  
[www.vortice-france.com](http://www.vortice-france.com)  
[contact@vortice-france.com](mailto:contact@vortice-france.com)

Vortice Limited  
Beeches House-Eastern Avenue  
Burton on Trent  
DE13 0BB  
Tel. (+44) 1283-49.29.49  
Fax (+44) 1283-54.41.21  
United Kingdom  
[www.vortice.ltd.uk](http://www.vortice.ltd.uk)  
[sales@vortice.ltd.uk](mailto:sales@vortice.ltd.uk)

