



VORT QBK SAL ES RANGE

Energy saving double inlet cabinet fans

PRODUCT SPECIFICATIONS

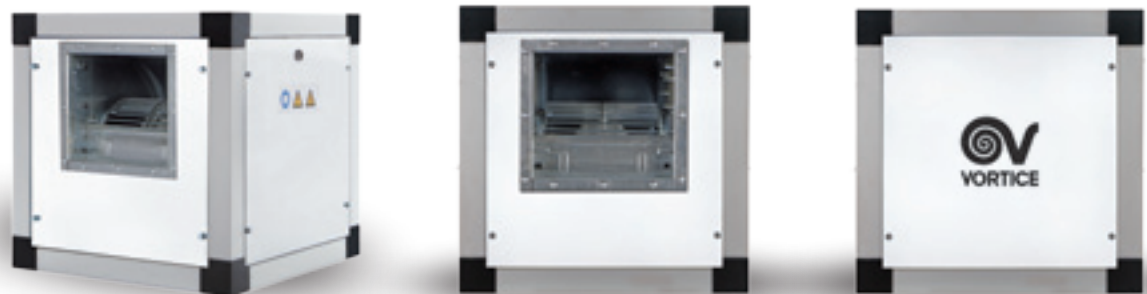
Designed for ducted ventilation applications: kitchens, bathrooms, offices, laboratories, factories, shops, laundry, models, restaurants, bars, theatres, ballrooms, etc.

LONG LIFE 30.000 h



- 5 models single phase.
- Flow rates up to 5400 m³/h.
- Extruded UNI 9006 aluminium frames assembled with diecast aluminium joints.
- Sandwich panels, insulated by expanded polyurethane (densit 40 kg/m³), sheet 23 mm thick (external 6/10 thick zinc treated).
- Fan motor units with dynamically balanced twin intake direct feed forward-curved centrifugal blades, made using galvanized steel (ISO standard 1940).
- Brushless motors, all in class F, with shafts turning in ball bearings and suitable for control with external potentiometer (signal 0-10 V), supplied as standard.
- 1 inspection panel with triangular key.
- 1 pre-cut intake panel to accommodate square ducting.
- 1 pre-cut intake panel to accommodate round ducting.
- Operating temperature between -20 and +40 °C.
- Protection rating: IP20.
- Insulation class: Cl.I Ⓣ.

Fans used in VORT QBK SAL ES range comply with ErP N° 327/2011/UE.





KEY FEATURES

- Low power consumption combined with high performance thanks to brushless EC motors.
- Low noise emissions.
- Wide range of speed adjustment by means of an external potentiometer (signal 0-10 V).
- High reliability and reduced maintenance requirements.
- Designed for application in ventilation duct.
- Flexible installation thanks to the possibility to adapt the air delivery side according to the system requirements by varying the setting of the removable panels of the enclosure.
- The speeds of the fan units are adjustable with an external potentiometer (0-5V or 0-10V DC signal).

TECHNICAL DATA

Models	Code	V ~ 50/60 Hz	W max	A max	RPM*	Max Airflow		Max Pressure		°C Max	IP motor	Kg
						m ³ /h	l/s	mmH ₂ O	Pa			
VORT QBK SAL ES 1000	45290	230	260	1.8	2100	1070	297	82	804	40	20	26
VORT QBK SAL ES 7/7 M	45291				2000	2940	817	60	588		28	
VORT QBK SAL ES 9/9 M	45292		1100	4.6	1100	3500	972	90	883		44	38
VORT QBK SAL ES 10/10 M	45293				1000	4150	1153	120	1177			
VORT QBK SAL ES 12/12 M	45295		1700	7.0	850	5400	1500	113	1108		54	71

* RPM measured at the point of Maximum Airflow.

The performance data are relative to the F.M.W.L. (Fan Max Working Limit) maximum use curve obtained with the highest DC motor setting.

VORT QBK SAL ES RANGE

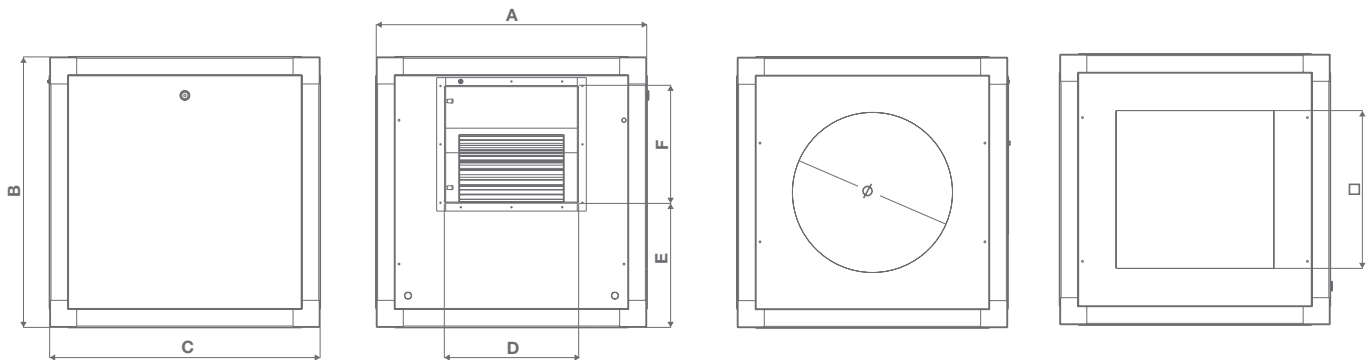
Energy saving double inlet cabinet fans

SOUND LEVELS

Models	Code	Speed	125 Hz	250 Hz	500 Hz	1000 Hz	2000 Hz	4000 Hz	8000 Hz	Lw dB (A)	Lp dB (A) 3m*
VORT QBK SAL ES 1000	45290	Max	38.9	40.7	46.4	51.4	52.3	49.4	39.6	60.9	40.9
VORT QBK SAL ES 7/7 M	45291		50.0	57.1	58.6	64.9	63.5	61.2	53.8	73.2	52.7
VORT QBK SAL ES 9/9 M	45292		49.7	50.7	64.0	60.9	59.3	57.4	47.7	71.2	50.7
VORT QBK SAL ES 10/10 M	45293		52.4	53.8	52.4	54.9	52.3	49.5	36.0	64.4	43.9
VORT QBK SAL ES 12/12 M	45295		49.9	56.9	55.0	55.8	55.7	48.4	35.8	66.4	45.9

* Sound pressure level measured at 3 m in free field conditions with long-cased appliance in delivery mode, in accordance with standard EN ISO 3741.

DIMENSIONS



Models	A	B	C	D	E	F	Ø	□
VORT QBK SAL ES 1000	500	500		226	270	110	250	250
VORT QBK SAL ES 7/7 M				232	229	208		
VORT QBK SAL ES 9/9 M	600	600		298	170	262	355	350
VORT QBK SAL ES 10/10 M				331	248	289		
VORT QBK SAL ES 12/12 M	700	700		395	296	341	450	450

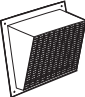

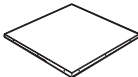

Dimensions (mm)



VORT QBK
SAL ES
RANGE

CABINET FANS
ENERGY SAVING

ACCESSORIES

	Description	Code	Product	
	QBK ABC - Air cowling	7/7 - 9/9	24200	45290 - 45291 - 45292
		10/10 - 12/12	24202	45293 - 45295
	QBK RRS - Round nipple joint intake	Ø 250	24205	45290 - 45291
		Ø 315	24206	45292
		Ø 400	24207	45293
		Ø 450	24208	45295
	QBK RRC SAL- Rain guard	7/7 - 9/9	24209	45290 - 45291 - 45292
		10/10	24210	45293
		12/12	24211	45295
	QBK F - Feet	24204	all models	

APPLICATIONS





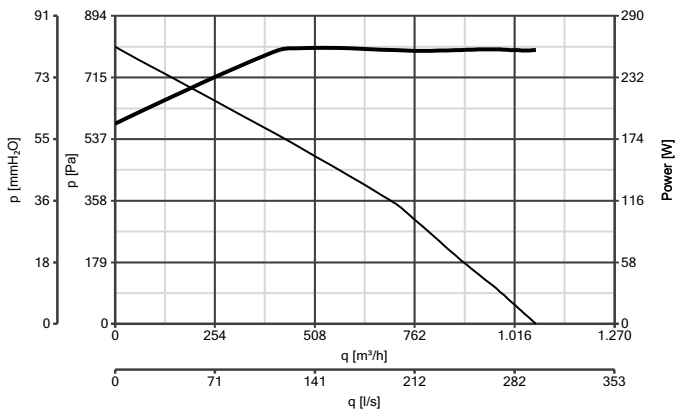
VORT QBK SAL ES RANGE

Energy saving double inlet cabinet fans

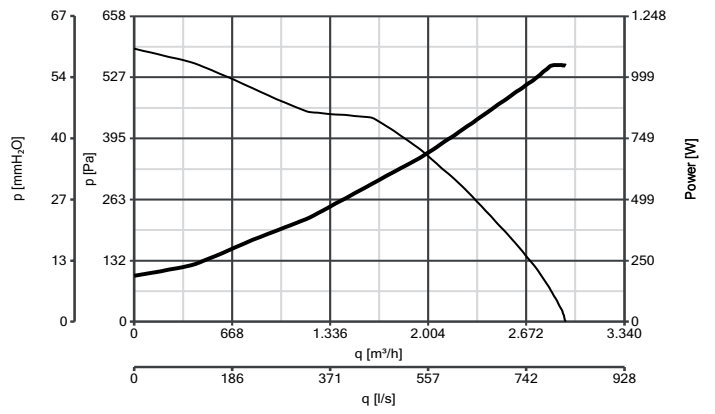
PERFORMANCE CURVES

— Delivery — Power consumption

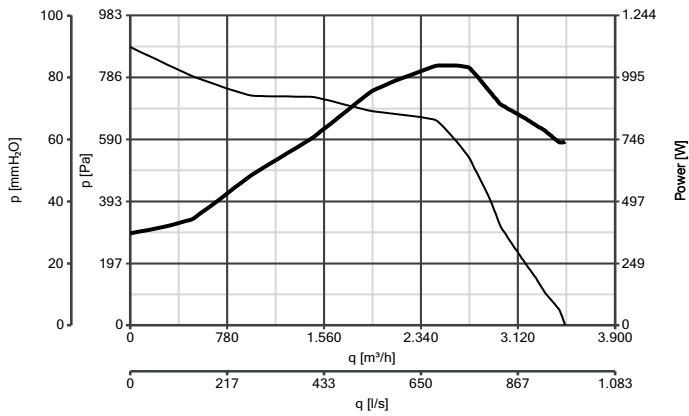
VORT QBK SAL ES 1000



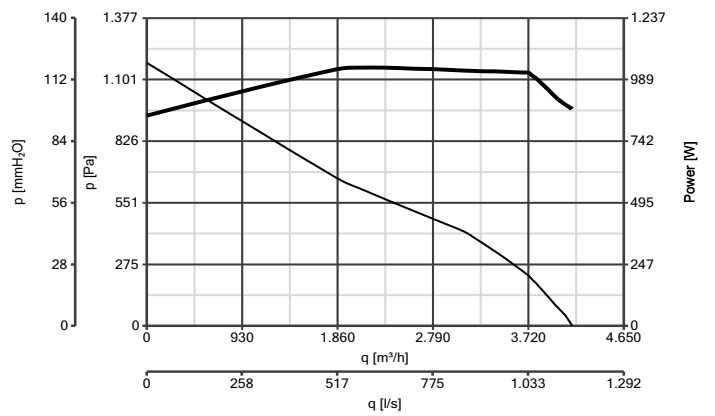
VORT QBK SAL ES 7/7 M



VORT QBK SAL ES 9/9 M



VORT QBK SAL ES 10/10 M



VORT QBK SAL ES 12/12 M

