

## G13 Push-through Lampholders

### For fluorescent lamps T8 (T26), T12 (T38)

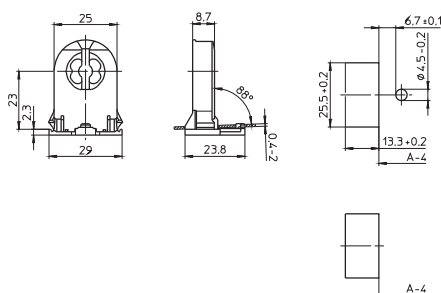
Lampholders with integrated starter holder have push-in twin terminals for the lamp circuit and push-in terminals for the starter circuit.  
Pin support for reliable contact  
Max. permitted temperature  $T_m$  on the rear side of the lampholder: 110 °C

G13 push-through lampholders for lamps T8 and T12  
Lamp axis: 23 mm  
Casing: PC, white, frontplate: PBT GF, white T140, nominal rating: 2/500  
Push-in terminals: 0.5–1 mm<sup>2</sup>  
Lateral fixing clips for wall thickness 0.4–2 mm  
Weight: 6 g, unit: 1000 pcs.

Type: 27700/27701

**Ref. No.: 109330** with stop

**Ref. No.: 109331** without stop

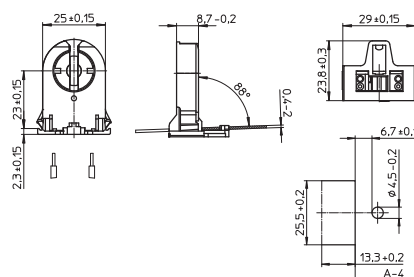


G13 Rotoclic push-through lampholders for lamps T8 and T12

Lamp axis: 23 mm  
Casing: PC, white, frontplate: PBT GF, white T140, nominal rating: 2/500  
Push-in terminals: 0.5–1 mm<sup>2</sup>  
Lateral fixing clips for wall thickness 0.4–2 mm  
Weight: 6.8 g, unit: 1000 pcs.  
Type: 27700/27701

**Ref. No.: 546641** with stop

**Ref. No.: 546642** without stop



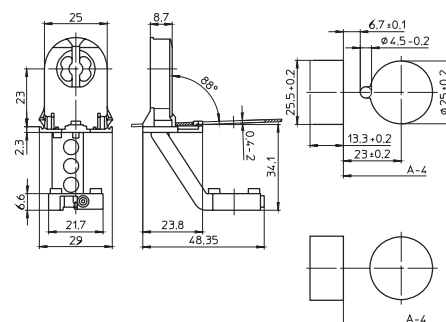
G13 push-through lampholders for lamps T8

With starter attachment

Lamp axis: 23 mm  
Casing: PC, white, frontplate: PBT GF, white T140, nominal rating: 2/500  
Push-in terminals: 0.5–1 mm<sup>2</sup>  
Lateral fixing clips for wall thickness 0.4–2 mm  
Weight: 10.4 g, unit: 500 pcs.  
Type: 27800/27801

**Ref. No.: 109332** with stop

**Ref. No.: 109335** without stop



G13 Rotoclic push-through lampholders for lamps T8, with starter attachment

Lamp axis: 23 mm  
Casing: PC, white, frontplate: PBT GF, white T140, nominal rating: 2/500  
Push-in terminals: 0.5–1 mm<sup>2</sup>  
Lateral fixing clips for wall thickness 0.4–2 mm  
Weight: 10.4 g, unit: 500 pcs.  
Type: 27800/27801

**Ref. No.: 546647** with stop

**Ref. No.: 546648** without stop

