

ComfortLine LED Drivers – Dimmable and Adjustable

900/1050/1200/1400 mA / max. 60.2 W

The dial can be used to set the current output to 900 mA (1), 1050 mA (2), 1200 mA (3) or 1400 mA (4).

Electrical characteristics

Secondary side switching of LED modules is not allowed.

Power factor at full load: > 0.95

Dimming

The dimming function is achieved by applying a PWM signal.

Dimming range: 3 to 100%

If no dimming interface is connected, brightness will stay at 100%.

Connection details

Mains voltage: 220–240 V ± 10%

Mains frequency: 50–60 Hz

DC operation: 198–264 V DC, 0 Hz

Push-in terminals: 0.2–1.5 mm²

(NTC interface: 0.2–0.5 mm²)

Safety features

Electronic short-circuit protection

Overload protection

Protection against "no load" operation

Degree of protection: IP20

Protection class I

SELV

The LEDs are thermally protected by the driver's NTC interface, which ensures the current will be reduced when a critical temperature is reached.

Product guarantee: 5 years



NTC at LED module 220 kΩ	
R (kΩ)	Nominal current (%)
34	100
27	60
16	0 (off)

1-10V



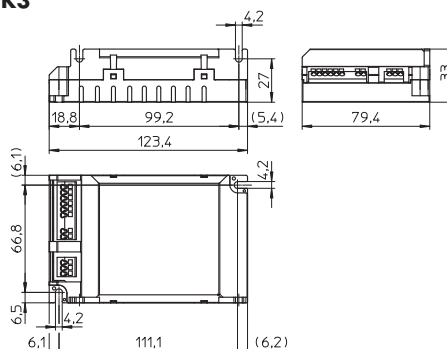
See page 264

Expected service life time

at operation temperatures at t_c point

Operation current	Ref. No. 186208	
all	85 °C	75 °C
hrs.	50,000	100,000

K3



Max. output W	Type	Ref. No.	Mains voltage 0 Hz, 50/60 Hz V	Mains current mA	Current output DC mA	Voltage output DC V	Max. voltage without load DC V	Efficiency at full load % (230 V)	Ambient temperature t_a °C	Casing temperature t_c °C	Weight g
------------------	------	----------	---	---------------------	----------------------------	---------------------------	---	--	---------------------------------------	--------------------------------------	-------------

K3 – Dimensions: 123.4x79.4x33 mm

38.7/ 45.1/ 51.6/ 60.2	ECXd 1400.025	186208	198–264 220–240	315–290 350–265	900 +5/-10%/ 1050 +5/-10%/ 1200 +5/-10%/ 1400 +5/-10%	20–43	< 52	> 85	-20 to 50	85	230
---------------------------------	---------------	--------	--------------------	--------------------	--	-------	------	------	-----------	----	-----