

Wiring inserts with push-fit foot
For G13 twin lampholders 108773/108775

Material: PC, white

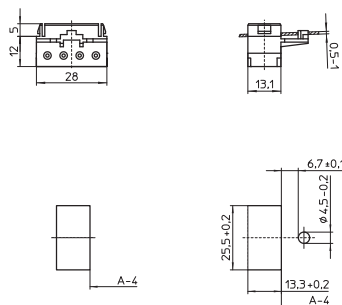
Push-in terminals: 0.5–1 mm²

Weight: 4.4 g, unit: 500 pcs.

Type: 22860/22861

Ref. No.: 545261 with stop

Ref. No.: 545262 without stop



1

2

G13 Built-in Lampholders

For fluorescent lamps T8 (T26), T12 (T38)

Lampholders with integrated starter holder
are equipped with big rotor and have
push-in twin terminals for the lamp circuit and
push-in terminals for the the starter circuit.

Pin support for reliable contact

(except for type 485)

Casing: PC, white, frontplate/rotor: PBT GF, white

Max. permitted temperature T_m

on the rear side of the lampholder: 110 °C

T-Marking acc. to IEC

G13 built-in lampholders for lamps T8 and T12

Lampholder thickness: 13 mm

T140, nominal rating: 2/500

Push-in terminals: 0.5–1 mm²

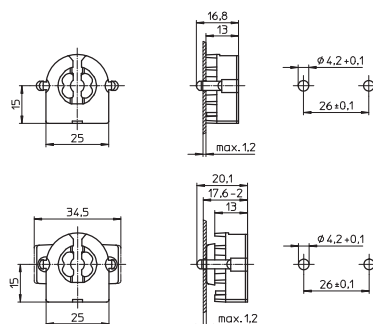
Rear split pins for wall thickness up to 1.2 mm

Weight: 4.6/5.4 g, unit: 1000 pcs.

Type: 47105/47106

Ref. No.: 509152

Ref. No.: 509154 with spring adjustment



5

6

G13 built-in lampholders for lamps T8 and T12

Lampholder thickness: 9.5 mm

T140, nominal rating: 2/500

Push-in terminals: 0.5–1 mm²

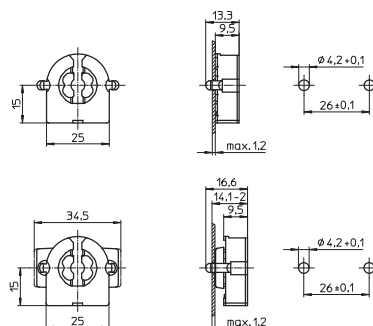
Rear split pins for wall thickness up to 1.2 mm

Weight: 4.4/5.1 g, unit: 1000 pcs.

Type: 47505/47506

Ref. No.: 509162

Ref. No.: 509164 with spring adjustment



7

8

G13 built-in lampholder for lamps T8 and T12

Lampholder thickness: 10.5 mm

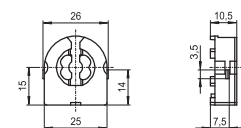
T140, nominal rating: 2/500

Push-in terminals: 0.5–1 mm²

Weight: 4.6 g, unit: 1000 pcs.

Type: 47304

Ref. No.: 509156



9

10