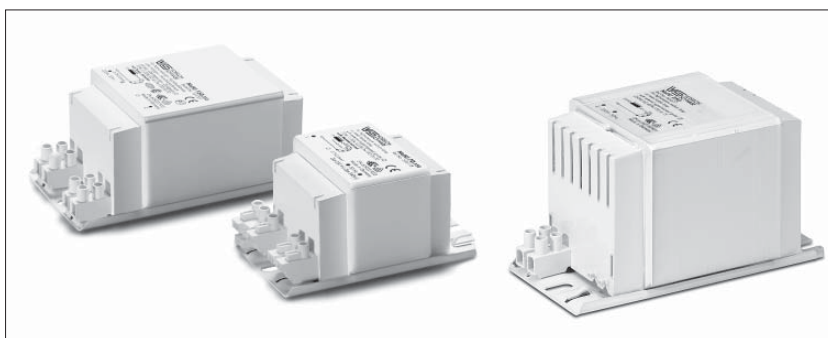


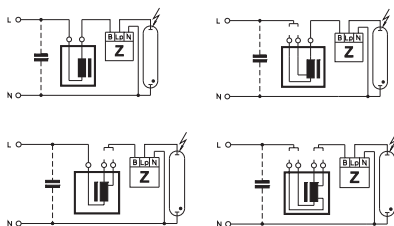
## Ballasts with Thermal Cut-out for HS and HI Lamps 35 to 150 W



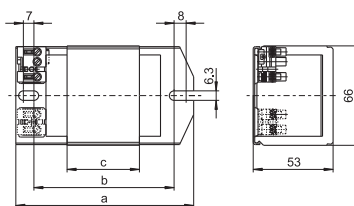
Shape: 53x66 mm

For high pressure sodium lamps (HS), metal halide lamps (HI) and ceramic discharge lamps (C-HI)  
 Vacuum-impregnated with polyester resin  
 With VS-patented, intelligent temperature switch with automatic reset (evaluates the temperature and current of the ballast)  
 Protection class I  
 tw 130

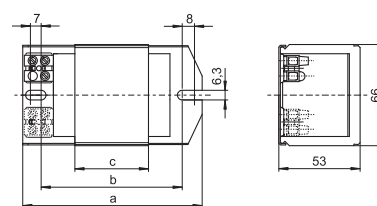
Ballasts for pulse ignition system on request



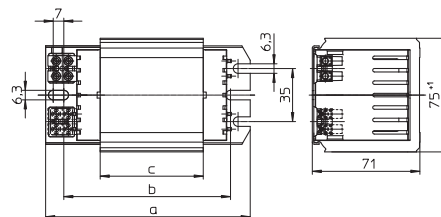
**A** Push-in terminals: 0.5–1.5 mm<sup>2</sup>



**B** Screw terminals: 0.5–2.5 mm<sup>2</sup>



**C** Screw terminals: 0.75–2.5 mm<sup>2</sup>



Lamp			Ballast											Capacitor	
Output W	Type	Current A	Type	Ref. No.	Voltage AC V, Hz	Drawing	a mm	b mm	c mm	Weight kg	Δt K	Power factor (λ)	Energy efficiency	C <sub>P</sub> μF	I <sub>N</sub> A
<b>Push-in terminals: 0.5–1.5 mm<sup>2</sup></b>															
35	HS, HI	0.53	NaHJ 35.209	<b>543737</b>	230/240, 50	A	108	86	36	1.07	35	0.36	<b>A2</b>	6	0.22
			NaHJ 35.485*	<b>506122</b>	230/240, 50	A	108	86	36	1.07	60	0.40	EEI=A3	6	0.22/0.21
			NaHJ 35.638	<b>509170</b>	220, 60	A	108	86	36	1.07	50	0.41	EEI=A3	5	0.23
50	HS, HI	0.76	NaH 50.206	<b>543738</b>	230, 50	A	108	86	48	1.39	45	0.35	<b>A2</b>	8	0.30
50	HS, HI	0.76	NaHJ 70/50.157*	<b>507341</b>	230, 50	A	108	86	42	1.23	55	0.37	EEI=A3	8	0.30
											70	0.37	EEI=A3	12	0.38
50	HS, HI	0.76	NaHJ 70/50.520*	<b>538361</b>	230, 50	A	117	92	48	1.39	45	0.36	EEI=A3	8	0.30
											55	0.36	EEI=A3	12	0.38
70	HS, HI	0.98	NaHJ 70.128*	<b>535191</b>	230, 50	A	108	86	36	1.07	70	0.36	EEI=A3	12	0.38
			NaHJ 70.226	<b>543741</b>	230, 50	A	108	86	48	1.39	50	0.37	<b>A2</b>	12	0.38
			NaHJ 70.128*	<b>533572</b>	230/240, 50	A	108	86	36	1.07	70/75	0.36	EEI=A3	12	0.38/0.37
			NaHJ 70.653	<b>509169</b>	220, 60	A	108	86	36	1.07	60	0.42	EEI=A3	10	0.40
70	HS, HI	0.98	NaHJ 100/70.703*	<b>507342</b>	230, 50	A	145	120	48	1.39	60	0.37	EEI=A3	12	0.38
100	HS, HI	1.20									70	0.43	EEI=A3	12	0.55
100	HS, HI	1.20	NaHJ 100.670*	<b>506120</b>	230/240, 50	A	117	92	48	1.39	70	0.42	EEI=A3	12	0.55/0.53
			NaHJ 100.941*	<b>539492</b>	230/240, 50	A	108	86	42	1.23	75/80	0.42	EEI=A3	12	0.55/0.53
100	HS, HI	1.20	NaHJ 150/100.973*	<b>507343</b>	230, 50	A	145	120	75	2.02	55	0.41	<b>A2</b>	12	0.55
150	HS, HI	1.80									75	0.41	EEI=A3	20	0.57
150	HS, HI	1.80	NaHJ 150.620*	<b>535216</b>	230, 50	A	145	120	64	1.80	70	0.40	EEI=A3	20	0.77
			NaHJ 150.620*	<b>538543</b>	230/240, 50	A	145	120	64	1.80	70/75	0.40	EEI=A3	20	0.77/0.74
			NaHJ 150.355*	<b>509100</b>	230/240, 50	A	145	120	75	2.02	65	0.39	EEI=A3	20	0.77/0.74
			NaHJ 150.679	<b>509171</b>	220, 60	A	145	120	75	2.02	65	0.42	EEI=A3	16	0.80

\* Ballasts without CE marking for replacements or markets outside of the EU