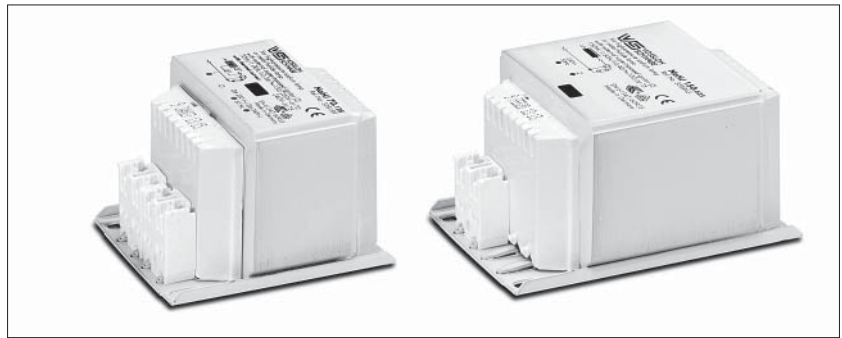
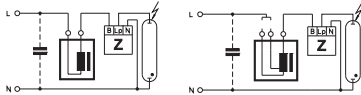
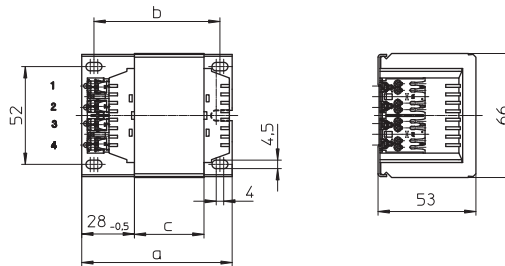


Compact Ballasts for HS and HI Lamps 35 to 150 W

Shape: 53x66 mm



For high pressure sodium lamps (HS),
metal halide lamps (HI) and
ceramic discharge lamps (C-HI)
Vacuum-impregnated with polyester resin
Push-in terminals: 0.5–1 mm²
IDC terminals for leads H05V-U 0.5
Protection class I
Ballasts with screw terminals on request



Lamp			Ballast											Capacitor	
Output W	Type	Current A	Type	Ref. No.	Voltage AC V, Hz	a mm	b mm	c mm	Weight kg	Δt K	t _w °C	Power factor λ	Energy efficiency	C _p μF	I _N A
35	HS, HI	0.53	NaHJ 35.485*	538807	230/240, 50	80	67	36	1.07	60	130	0.40	EEL=A3	6	0.22/0.21
70	HS, HI	0.98	NaHJ 70.128*	538810	230, 50	80	67	36	1.07	70	130	0.36	EEL=A3	12	0.38
			NaHJ 70.128*	538823	230/240, 50	80	67	36	1.07	70/75	130	0.36	EEL=A3	12	0.38/0.37
			NaHJ 70.653	538828	220, 60	80	67	36	1.07	60	130	0.42	EEL=A3	10	0.40
150	HS, HI	1.80	NaHJ 150.620*	538834	230, 50	107	94	64	1.80	70	130	0.40	EEL=A3	20	0.77
			NaHJ 150.625	538843	240, 50	107	94	64	1.80	75	130	0.40	EEL=A3	20	0.74
			NaHJ 150.679	542557	220, 60	107	94	64	1.80	75	130	0.44	EEL=A3	16	0.80

* Ballasts without CE marking for replacements or markets outside of the EU

With Thermal Cut-out

Thermal cut-out with automatic reset

Lamp			Ballast											Capacitor	
Output W	Type	Current A	Type	Ref. No.	Voltage AC V, Hz	a mm	b mm	c mm	Weight kg	Δt K	t _w °C	Power factor λ	Energy efficiency	C _p μF	I _N A
35	HS, HI	0.53	NaHJ 35.485*	538258	230/240, 50	80	67	36	1.07	60	130	0.40	EEL=A3	6	0.22/0.21
70	HS, HI	0.98	NaHJ 70.128*	539223	230/240, 50	80	67	36	1.07	70/75	140	0.36	EEL=A3	12	0.38/0.37
			NaHJ 70.653	538537	220, 60	80	67	36	1.07	60	130	0.42	EEL=A3	10	0.40
100	HS, HI	1.20	NaHJ 100.581*	539081	230/240, 50	107	94	64	1.80	60	130	0.42	EEL=A3	12	0.55/0.53
150	HS, HI	1.80	NaHJ 150.159	548260	220, 50	107	94	64	1.80	75	130	0.41	EEL=A3	20	0.77
			NaHJ 150.620*	538262	230, 50	107	94	64	1.80	70	130	0.40	EEL=A3	20	0.77
			NaHJ 150.620*	539306	230, 50	107	94	64	1.80	70	140	0.40	EEL=A3	20	0.77
			NaHJ 150.620	538264	240, 50	107	94	64	1.80	75	130	0.40	EEL=A3	20	0.74
			NaHJ 150.620	539286	240, 50	107	94	64	1.80	75	140	0.40	EEL=A3	20	0.74
			NaHJ 150.679	539311	220, 60	107	94	64	1.80	75	130	0.44	EEL=A3	16	0.80

* Ballasts without CE marking for replacements or markets outside of the EU