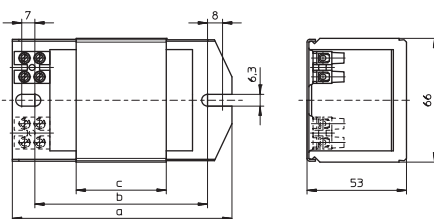
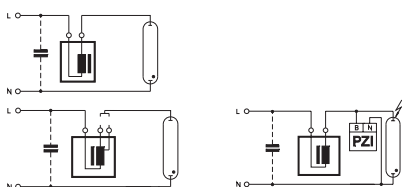
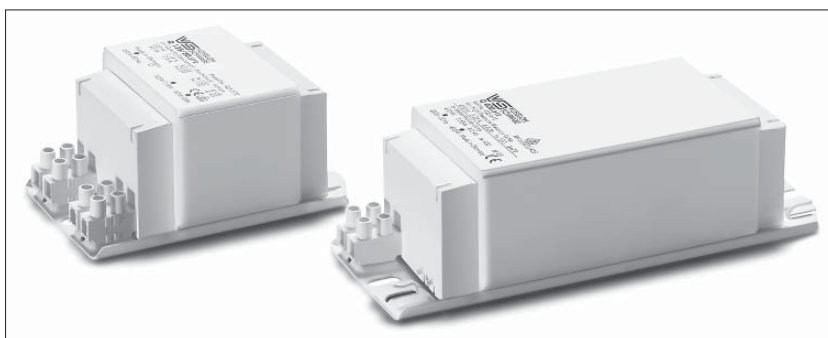


Ballasts for HM and HI Lamps 50 to 400 W

Shape: 53x66 mm

For mercury vapour lamps (HM) and metal halide lamps (HI) with ignition voltage 1 kV
Vacuum-impregnated with polyester resin
Screw terminals: 0.5–2.5 mm²
Protection class I
tw 130



Lamp			Ballast										Capacitor	
Output W	Type	Current A	Type	Ref. No.	Voltage AC V, Hz	a mm	b mm	c mm	Weight kg	Δt K	Power factor λ	Energy efficiency	Cp μF	IN A
50	HM	0.61	Q 50.501	167100	220, 50	108	86	36	1.07	55	0.44	EEl=A3	7	0.28
			Q 50.550*	167213	230, 50	108	86	36	1.07	55	0.44	EEl=A3	7	0.27
			Q 50.508	167125	240, 50	108	86	36	1.07	65	0.42	EEl=A3	7	0.26
			Q 50.535	167185	220, 60	108	86	36	1.07	50	0.44	EEl=A3	6	0.28
50	HM	0.61	Q 80/50.596*	167311	230, 50	108	86	36	1.07	55	0.43	EEl=A3	7	0.27
80	HM	0.80								70	0.51	EEl=A3	8	0.41
50	HM	0.61	Q 80/50.592	167306	220, 60	108	86	36	1.07	50	0.44	EEl=A3	6	0.28
80	HM	0.80								60	0.53	EEl=A3	7	0.43
80	HM	0.80	Q 80.587	167302	220, 50	108	86	36	1.07	65	0.52	EEl=A3	8	0.43
			Q 80.588*	167304	230, 50	108	86	36	1.07	70	0.51	EEl=A3	8	0.41
			Q 80.510	167132	240, 50	108	86	36	1.07	60	0.48	EEl=A3	8	0.40
			Q 80.584	167299	220, 60	108	86	36	1.07	55	0.51	EEl=A3	7	0.43
80	HM	0.80	Q 125/80.611*	167326	230, 50	108	86	42	1.23	50	0.49	EEl=A3	8	0.41
125	HM	1.15								70	0.54	EEl=A3	10	0.60
80	HM	0.80	Q 125/80.511	167136	240, 50	108	86	48	1.39	50	0.48	EEl=A3	8	0.40
125	HM	1.15								70	0.52	EEl=A3	10	0.58
125	HM	1.15	Q 125.549	169947	220, 50	108	86	36	1.07	70	0.56	EEl=A3	10	0.63
			Q 125.568*	167263	230, 50	108	86	36	1.07	75	0.54	EEl=A3	10	0.60
			Q 125.512	167140	240, 50	108	86	48	1.39	65	0.51	EEl=A3	10	0.58
			Q 125.598	502818	220, 60	108	86	36	1.07	60	0.57	EEl=A3	10	0.65
250	HM	2.13	Q 250.513	167144**	220, 50	145	120	75	2.10	75	0.58	A2	18	1.26
			Q 250.528	167367**	230, 50	145	120	75	2.10	75	0.56	A2	18	1.20
			Q 250.703	507256**	240, 50	145	120	75	2.10	75	0.53	A2	18	1.15
			Q 250.606	533705**	220, 60	145	120	64	1.80	70	0.58	A2	15	1.30
400	HM	3.25	Q 400.616	528236**	220, 50	160	135	95	2.50	80	0.60	EEl=A3	25	2.00
			Q 400.561	167250**	220, 50	180	155	110	2.88	75	0.60	A2	25	2.00
			Q 400.612	167330**	230, 50	180	155	110	2.88	75	0.56	A2	25	1.90
			Q 400.669	167374**	240, 50	180	155	110	2.88	75	0.54	A2	25	1.85
			Q 400.613	167335**	220, 60	180	155	110	2.88	65	0.60	A2	25	2.00
			Q 400.613	508245**	220, 60	180	155	95	2.50	75	0.60	A2	25	2.00

* Ballasts without CE marking for replacements or markets outside of the EU

** Suitable for metal halide lamps (HI) with ignition voltage 1 kV in combination with pulse ignitor PZI 1000/1 K (see page 52)