

## G13 Push-through Lampholders for T8, T12 Lamps

### Lampholders for fluorescent lamps T8 and T12 / Medium Bi-Pin

Nominal rating: 660 W/600 V  
Push-in twin terminals: 18 AWG, solid or stranded conductors, tinned  
Lateral fixing clips for wall thickness 0.4–2 mm (0.016"–0.079")

Casing: PC, white  
(shunted versions: PBT, white)  
Front plate: PBT GF, white

All products in this chapter carry a T rating of T120 acc. to UL standards (shunted versions correspond to Circle-I requirements).

G13 push-through lampholders for lamps T8, T12

Pin support for reliable contact

Lamp axis: 17 mm (0.67")

Weight: 5.4 g, unit: 1000 pcs.

Type: 26300/26302 with stop

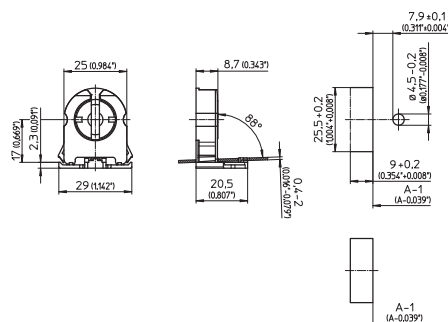
**Ref. No.: 551271**

**Ref. No.: 551275** internally shunted

Type: 26310/26312 without stop

**Ref. No.: 551272**

Ref. No.: 551277 internally shunted



G13 push-through lampholders for lamps T8, T12

Pin support for reliable contact

Lamp axis: 23 mm (0.906")

Weight: 6.6 g, unit: 1000 pcs.

Type: 29100/29125 with stop

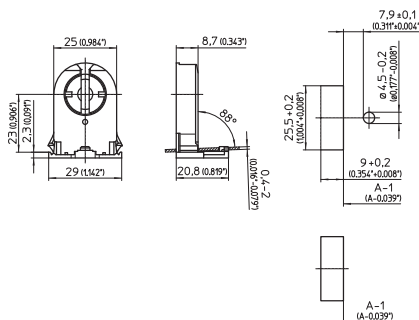
**Ref. No.: 545845**

**Ref. No.: 545840** internally shunted

Type: 29101/29126 without stop

**Ref. No.: 545849**

**Ref. No.: 545842** internally shunted



G13 push-through lampholders for lamps T8, T12

Pin support for reliable contact

Lamp axis: 31 mm (1.220")

Weight: 7.8 g, unit: 1000 pcs.

Type: 28700/28725 with stop

**Ref. No.: 109342**

**Ref. No.: 109376** internally shunted

Type: 28701/28726 without stop

**Ref. No.: 109343**

**Ref. No.: 109377** internally shunted

