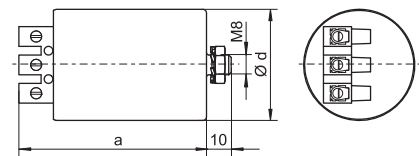


Electronic Superimposed Ignitors for HS Lamps 70 (DE) to 400 W and HI Lamps 35 to 400 W



Standard version or with automatic switch-off
 For high pressure sodium lamps (HS),
 metal halide lamps (HI) and
 ceramic discharge lamps (C-HI)
 Phasing of the ignition voltage:
 60–90 °el and 240–270 °el
 Max. permitted casing temperature: 105 °C
 Screw terminals: 0.75–4 mm²
 Fastening: male nipple with pre-assembled
 washer and nut
 For luminaires of protection class I and II

Al casing



Type	Ref. No.	Voltage AC 50–60 Hz V	Max. lamp current A	Internal loss W	Inherent heating K	Ignition voltage kV	Load capacity pF	Switch-off time sec./Hz	Casing			Weight g	
									d (Ø) mm	a mm	b mm		c mm
Aluminium casing (Al)													
Z 400 S	140427	220–240	5	< 3	< 25	4–5	20–100	—	45	76	—	—	250
Z 400 S D20	141583*	220–240	5	< 3	< 25	4–5	20–100	1216/50–60	45	90	—	—	280

* With IPP technology